

Friends of the Columbia Gorge

Protecting the Gorge Since 1980

Fall 2016 Newsletter

Inside:

Mosier Derailment
Raises Stakes

Pages 4-5



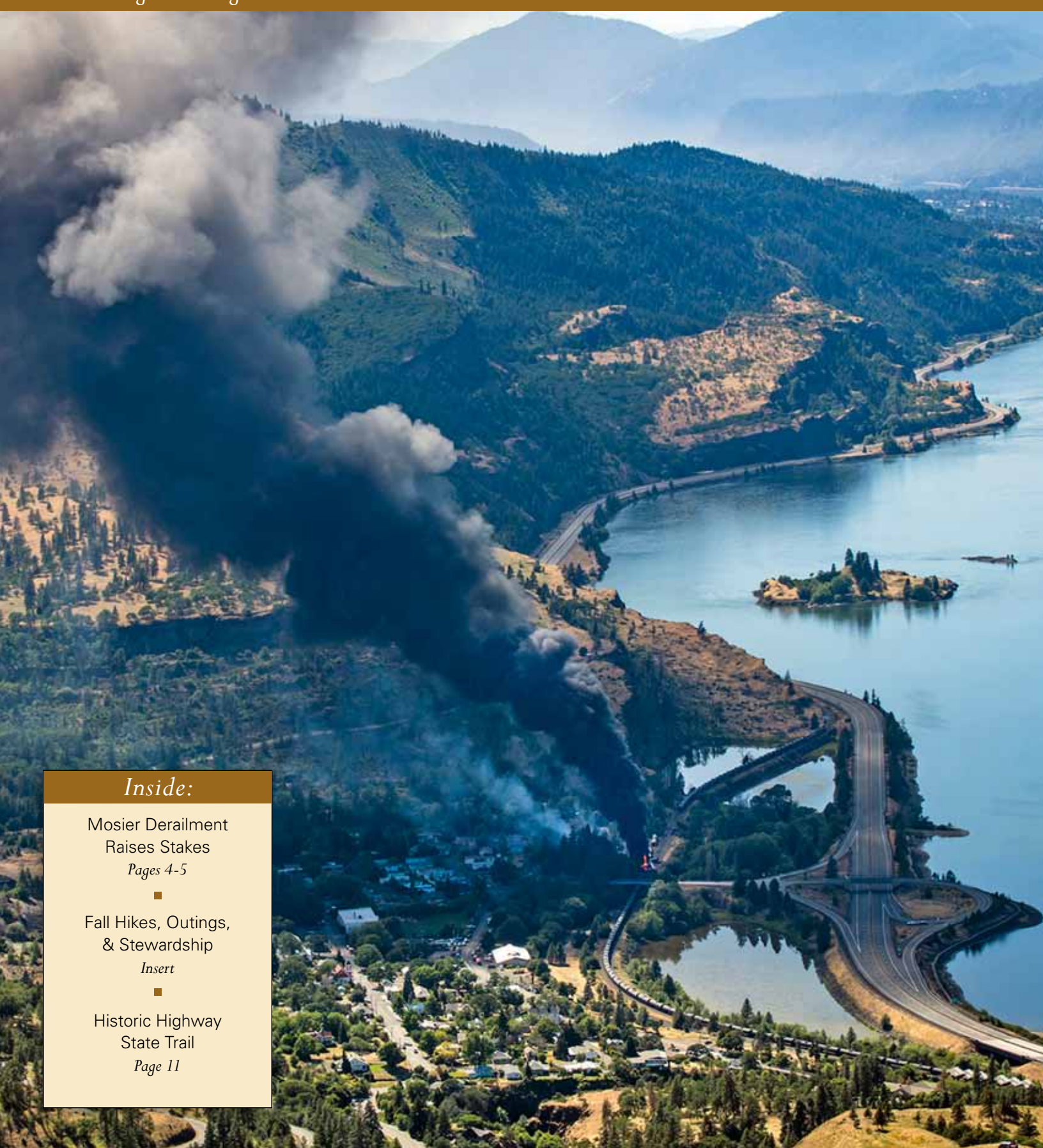
Fall Hikes, Outings,
& Stewardship

Insert



Historic Highway
State Trail

Page 11



Friends of the Columbia Gorge

FOUNDER NANCY RUSSELL, 1932-2008

BOARD OF DIRECTORS

ERIC LICHTENTHALER* CHAIR
VINCE READY* VICE CHAIR
KARI SKEDSVOLD SECRETARY/TREASURER
DEBBIE ASAKAWA TEMPLE LENTZ
KEITH BROWN* JOHN NELSON*
PAT CAMPBELL CARRIE NOBLES
GEOFF CARR MEREDITH SAVERY
JIM CHASE CHARLIE WEBSTER
GWEN FARNHAM POLLY WOOD*
JOHN HARRISON

BOARD OF TRUSTEES — LAND TRUST

JOHN NELSON* PRESIDENT
JIM CHASE SECRETARY/TREASURER
KEITH BROWN*
PAT CAMPBELL
DUSTIN KLINGER
BARBARA NELSON
RICK RAY*

STAFF

NATHAN BAKER SENIOR STAFF ATTORNEY
KYLE BROECKEL DEVELOPMENT ASSISTANT
PETER CORNELISON* FIELD REPRESENTATIVE
PAM DAVEE DEVELOPMENT OFFICER
KEVIN GORMAN EXECUTIVE DIRECTOR
STAN HALL CONTENT/PR SPECIALIST
KATE HARBOUR MEMBERSHIP COORDINATOR
MAEGAN JOSSY OUTREACH MANAGER
MICHAEL LANG CONSERVATION DIRECTOR
KATE LINDBERG OUTREACH ASSISTANT
KATE MCBRIDE* LAND TRUST MANAGER
STEVE MCCOY STAFF ATTORNEY
RYAN RITTENHOUSE CONSERVATION ORGANIZER
RENEE TKACH* GORGE TOWNS TO TRAILS MANAGER
PAIGE UNANGST FINANCE DIRECTOR
DAVID WILLIAMS GIS COORDINATOR, ENCORE FELLOW
SARA WOODS* LAND STEWARDSHIP COORDINATOR
SANDY WRIGHT DEVELOPMENT DIRECTOR

* GORGE AREA RESIDENTS

PUBLISHED AUGUST 2016

PUBLICATION SUPPORT

NEWSLETTER DESIGN: KATHY FORS AND KATHLEEN KRUSHAS / TO THE POINT PUBLICATIONS
EDITOR: BETSY TOLL / LUMIN CREATIVE SERVICES

PORTLAND OFFICE (UNTIL SEPTEMBER 15):

522 SW FIFTH AVE., SUITE 720, PORTLAND, OR 97204
503-241-3762

PORTLAND OFFICE (AFTER SEPTEMBER 15):

333 SW FIFTH AVE., SUITE 300, PORTLAND, OR 97204
503-241-3762

HOOD RIVER OFFICE:

205 OAK ST., SUITE 17, HOOD RIVER, OR 97031
541-386-5268

WASHOUGAL OFFICE:

887 MAIN ST., SUITE 202, WASHOUGAL, WA 98671
360-334-3180



Link to us on Twitter and Facebook
from our website: www.gorgefriends.org



Take Action!

No More Oil Disasters!

Some of our worst fears came to pass in June, when a train carrying Bakken crude oil derailed and caught fire in Mosier, Oregon. Fortunately, no one was killed or injured, but toxic smoke and ash contaminated Mosier and the Gorge, the Mosier water system was compromised, and oil spilled into the groundwater and the Columbia River.

Two years ago, the City of Mosier passed a resolution expressing strong concerns about the safety of oil transport by rail. More than 40 other municipalities and organizations have also passed similar resolutions. It is long past time that we protect our children, communities, and resources from irresponsible, destructive exploitation by oil companies.

Oregon Governor Kate Brown and other elected leaders have called for a temporary halt to oil train traffic in Columbia River

Sixteen oil tank cars derailed and four burst into flames in Mosier.
Photo: Michael McKeag

Gorge, but the oil companies have ignored even that request. Further, Governor Brown has not publicly opposed the proposed Tesoro Savage oil terminal in Vancouver, Washington.

Our elected leaders and representatives must do everything in their power to stop oil companies from endangering Gorge lives and communities and destroying ecosystems in the Columbia Gorge.

Call Governor Kate Brown today!

Urge Governor Brown to do everything in her power and use her authority now, to halt oil trains through the Columbia Gorge and to publicly oppose the Vancouver oil terminal.

Call Governor Brown at 503-378-4582.

Whether you're in Oregon, Washington, or elsewhere, contact your governor, congressional representatives, the White House, and other appropriate officials now. Demand they take action to protect the Columbia River Gorge from deadly oil-by-rail risks. Comments can be sent from our website at www.gorgefriends.org/nooiltrains. ■

Our email Action Alerts provide the most timely, effective way to take action for the Gorge. Subscribe at www.gorgefriends.org/subscribe, or call Ryan at 971-634-2034.

Citizen Action Makes the Difference! www.senate.gov or www.house.gov
Your voice is vital to Gorge protection. Let Congress hear from you.

Oregon

Sen. Ron Wyden, 202-224-5244
www.wyden.senate.gov/contact
Sen. Jeff Merkley, 202-224-3753
www.merkley.senate.gov/contact
Rep. Earl Blumenauer, 202-225-4811
Rep. Suzanne Bonamici, 202-225-0855
Rep. Greg Walden, 202-225-6730
Rep. Peter DeFazio, 202-225-6416
Rep. Kurt Schrader, 202-225-5711

Washington

Sen. Patty Murray, 202-224-2621
www.murray.senate.gov/email/index.cfm
Sen. Maria Cantwell, 202-224-3441
www.cantwell.senate.gov/public
Rep. Jaime Herrera Beutler, 202-225-3536
Rep. Derek Kilmer, 202-225-5916
Rep. Dan Newhouse, 202-225-5816
Rep. Suzan DelBene, 202-225-6311

Email your **Congressional Representative** by logging on to www.house.gov/writerep

Cover: The Union Pacific oil train derailment in Mosier, Oregon, on June 3. Photo: Paloma Ayala

Director's Letter

When Friends of the Columbia Gorge hired me as executive director in 1998, I already knew and loved many places in the Gorge, and I was excited about getting to know more.

One place I quickly fell in love with was the small town of Mosier, right on the river in Wasco County, Oregon. I first engaged with Mosier when locals organized to protect open land within the town, including a favorite waterfall and swimming hole. The property was for sale and citizens raised funds to purchase it and make it a city park. Today, Pocket Park is the launch point of Friends' Mosier Plateau trail.

Later, when the Gorge Commission was threatened with funding cuts, Mosier had a community rummage sale, dedicating proceeds to the Mosier Grange, the Free Tibet campaign, and the Columbia River Gorge Commission. I will never, ever forget the stunned look on a state legislator's face in Salem when the mayor of Mosier presented him with an oversized check for a few hundred dollars to support the Gorge Commission. Mosier helped save the Commission that year.

Mosier's community spirit faced its hardest test yet on June 3 this year, when a



96-car oil train derailed, spilling over 40,000 gallons of fuel and creating a terrifying blaze that burned for 14 hours.

Following the fire, Friends wanted to help Mosier residents share their stories about dealing with the crisis and its aftermath. I interviewed Mosier townspeople and our board member Vince Ready (www.lastinglight.photo) donated his moving images to create these stories. I hope you will take time to read the stories of the Mosier Voices, online at <https://mosiervoices.com>.

If anything, June 3 added more resolve and cohesion to this town whose motto is *Small Enough to Make a Difference*. Mayor Arlene Burns, who had worked for Friends

years ago, has hit her stride as the volunteer mayor and ad hoc leader on a mission to end oil-by-rail in the Columbia Gorge.

Ron Carroll, a volunteer firefighter and longtime Gorge activist, sums up the Mosier experience best. "People like me come out for the views and the natural environment, but quickly find out the people are the biggest asset," said Ron. "The views may bring you here, but the people will make you stay."

Ninety Gorge residents gathered in front of Mosier Community School in early July, near the site of the June 3 Union Pacific oil train derailment, spill, and fire. Their action to defend the Gorge honored the third anniversary of the oil train derailment and explosion in Lac-Mégantic, Quebec, in 2013 that killed 47 people and flattened part of the city's downtown area.

The fire on the tracks in Mosier was finally extinguished, but the passion in Gorge hearts is burning stronger than ever.

Kevin Gorman, Executive Director
kevin@gorgefriends.org

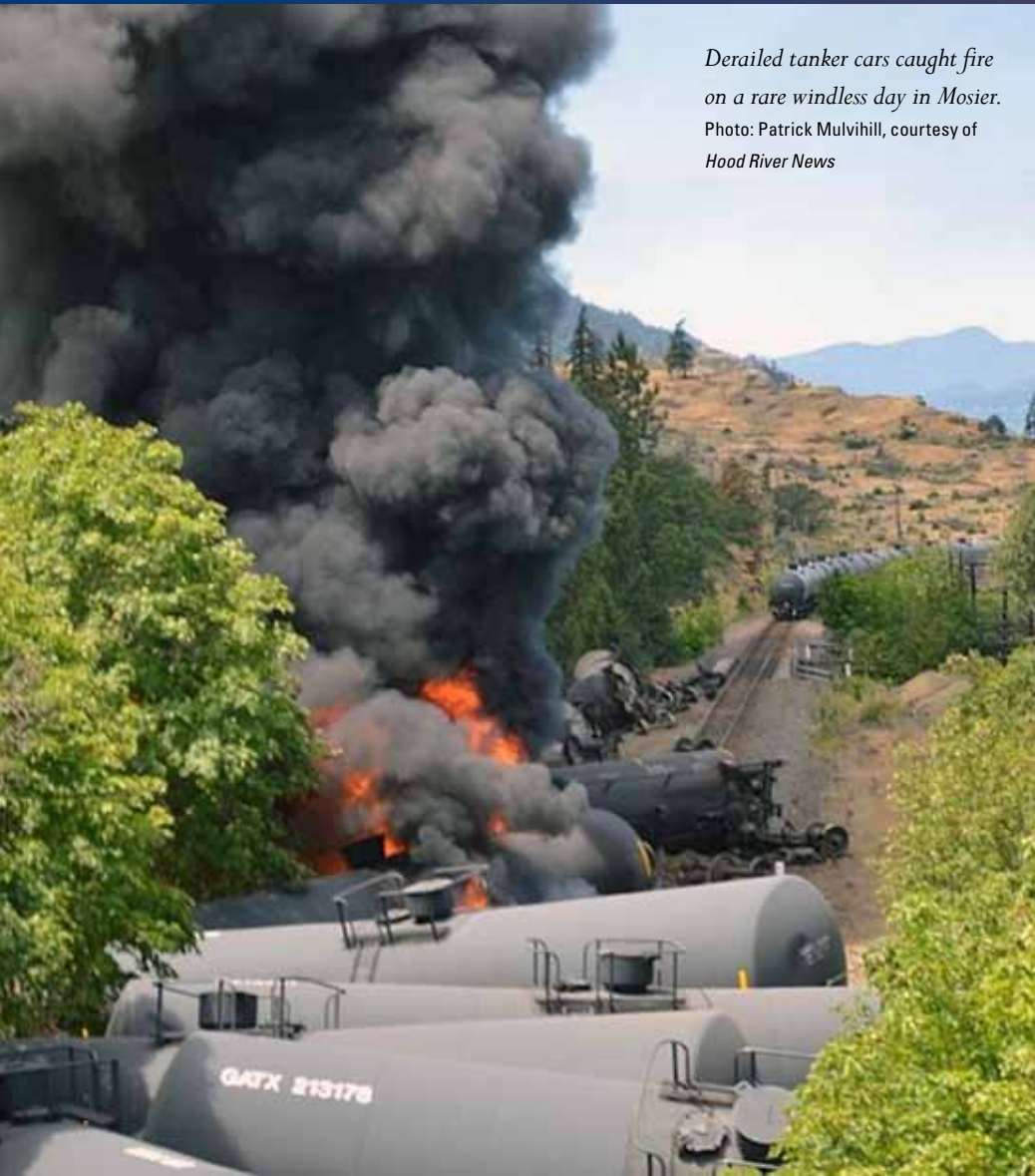


Friends of the Columbia Gorge works to ensure that the beautiful and wild Columbia Gorge remains a place apart, an unspoiled treasure for generations to come.

Mosier community members rallied on July 6 to defend Mosier and honor the community of Lac-Mégantic, Quebec, three years after the deadly derailment there.

Photo: Robin Dickenson

Derailed tanker cars caught fire on a rare windless day in Mosier.
Photo: Patrick Mulvihill, courtesy of Hood River News



Mosier Derailment Raises Stakes

Kevin Gorman, Executive Director, kevin@gorgefriends.org
Michael Lang, Conservation Director, michael@gorgefriends.org

On the morning of June 3, 2016, proponents of the Vancouver Energy Project were preparing for a lengthy six-week hearing before Washington’s Energy Facility Site Evaluation Council (EFSEC), seeking approval to build the largest oil-by-rail terminal in North America along the Columbia River in Vancouver, Washington. Until then, the Pacific Northwest had never experienced a catastrophic spill and fire from an oil train, events that had been occurring with alarming regularity around the country for the past two years.

Just after noon that day, everything changed when a Union Pacific train hauling

96 newer, supposedly safer, oil tank cars loaded with explosive Bakken crude oil derailed in the Columbia Gorge town of Mosier, Oregon. Traveling at only 25 miles per hour, 16 tank cars derailed and several burst into flame just yards from Mosier’s sewage treatment plant, igniting a fireball that sent massive clouds of toxic smoke hundreds of feet into the air. A school full of children excited about their upcoming summer break sat just 1,200 feet from the derailment site.

The fire burned for 14 hours as more than 40,000 gallons of oil poured onto the ground and into the Columbia River and the sewage plant. Miraculously, only a

slight breeze was stirring that day. No one was killed or injured. Had it been a typical windy Gorge day, the region would have become an inferno. As it was, water in Mosier was unfit for human use for several days after the disaster and long-term impacts remain to be determined, as the groundwater is now showing contaminants as a result of the spill.

Broken hardware

Soon after the incident, the Federal Railroad Administration determined the derailment was caused by broken lag bolts, and that Union Pacific’s “failure to maintain its track and track equipment

resulted in the derailment.” The report came one day after an announcement by Union Pacific that – contrary to moratorium requests by members of Oregon’s congressional delegation, Oregon Governor Kate Brown, and the Columbia River Gorge Commission – the rail line would resume transporting Bakken crude oil through the Gorge.

The derailment occurred two years after Mosier passed one of the first local resolutions to express concerns over oil-by-rail in the Columbia Gorge. Today, more than 40 other local governments and organizations have passed similar resolutions, including the Columbia River Gorge Commission and firefighters’ unions and associations.

Facing down Big Oil

The Mosier fire serves as a potent rallying point against two projects that would increase the frequency and volume of oil trains in the Gorge. First, Union Pacific is actually proposing to expand its rail lines in and around Mosier (see page 8

“Those flames ignited a fire within us that won’t be extinguished until every community is safe from the threat of oil-by-rail.”

– Mosier Mayor Arlene Burns

for details). The second project is the proposal to build North America’s largest oil terminal in Vancouver, Washington.

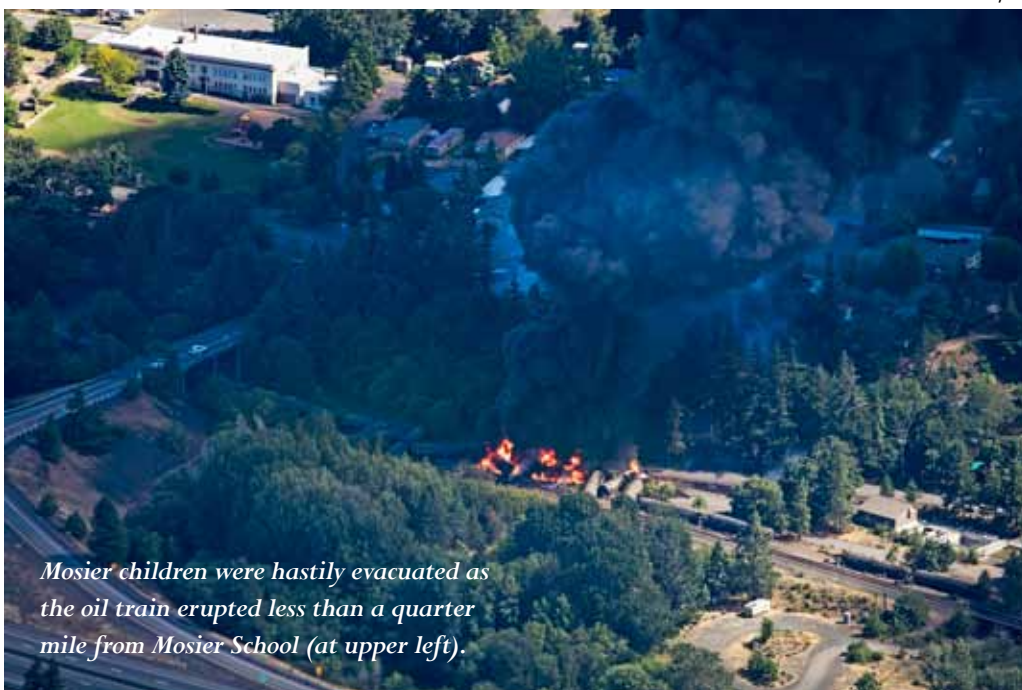
With our *Stand Up to Oil* coalition partners, Friends of the Columbia Gorge participated in a six-week trial-like hearing before EFSEC opposing the Vancouver Energy Project. We were represented by Earthjustice and also hired a pre-eminent land-use attorney and expert witnesses to argue that an oil terminal violates state law and the City of Vancouver’s land-use rules.

The hearings uncovered disturbing information and perspectives. The first

is that the Vancouver Energy Project is a shell company created to shield the companies backing the project, the Tesoro and Savage companies. Under law, Vancouver Energy Project is only required to carry \$10 million in liability insurance. Yet the 2013 oil train derailment and fire in Lac-Mégantic, Quebec, caused \$3 billion in damages to the community. If such an event occurred in Vancouver or the Columbia Gorge, Vancouver Energy Project could simply declare bankruptcy and Tesoro and Savage could walk away unscathed. Taxpayers would be left holding the bill.

The EFSEC is expected to make a recommendation to Washington Governor Jay Inslee this fall or winter, and Governor Inslee’s final decision is anticipated in 2017. He was bolstered to oppose the project by Washington Attorney General Bob Ferguson, who announced his opposition to the terminal proposal on the last day of the EFSEC hearing. We urge the EFSEC and Governor Inslee to heed Ferguson’s advice. ■

Photo: Paloma Ayala



Mosier children were hastily evacuated as the oil train erupted less than a quarter mile from Mosier School (at upper left).

Seriously?!?

In light of the recent Mosier derailment, Todd Schatzki, a consultant for the Vancouver Energy Project, suggested oil spills could be economic boons:

“When a spill occurs, new economic activity occurs to clean up contaminated areas, remediate affected properties, and supply equipment for cleanup activities,” said Schatzki. “A complete assessment of economic impact from spills would need to take into an account both the potential losses ... but also the potential new opportunities.”

Trails, Weeds, and Fire Prevention



Hikers at Lyle Cherry Orchard.

Photo: Debbie Asakawa

Kate McBride, Land Trust Manager, kate@gorgefriends.org

Management of our land trust properties requires a big vision, along with close attention to the details. This summer, we're deep in details, preparing to submit a development application to the Gorge Commission to add four miles of trail to the current Lyle Cherry Orchard trail. That's part of the big picture of *Gorge Towns to Trails*, our vision of a trail system linking Gorge communities and wildlands to expand responsible recreation opportunities and enhance local economies.

At the same time, on-the-ground preparation is underway. Our outstanding stewardship volunteers are working diligently to prevent yellow star thistle from spreading into areas where the new trail is proposed. In June, our crew removed a huge load of the invasive weed, and our partner Columbia Gorge Ecology Institute brought a group of high school students up to the Cherry Orchard to learn about invasive species and pull star thistle.

When trail construction eventually gets underway, we hope to have most or all of the star thistle removed on trail sections closest to Lyle, which will likely have the highest use. Two boot brushes were installed last year and more will be installed in the coming year, along with informative signs. The goal is to keep eastern portions of the Cherry Orchard property free of star thistle once the new trails are built.



Stewardship volunteers have removed loads of invasive star thistle. Photo: Stacy Flaherty

In addition to removing invasive weeds, we worked with volunteers in early summer to reduce fire risk on our land. Part of our property lies in the Lyle urban area, adjacent to homes, and we're particularly determined to minimize fire danger where urban and wild lands interface.

The best way to prevent a fire from growing in the eastern Gorge is through active fuel reduction efforts. On the local fire department's recommendation, we held a stewardship event early in the season, on June 3, to minimize fire danger from our mechanical tools. Volunteers cut tall grass and pruned away low-hanging branches on that windless day to reduce fuel ladders before the fire season starts.

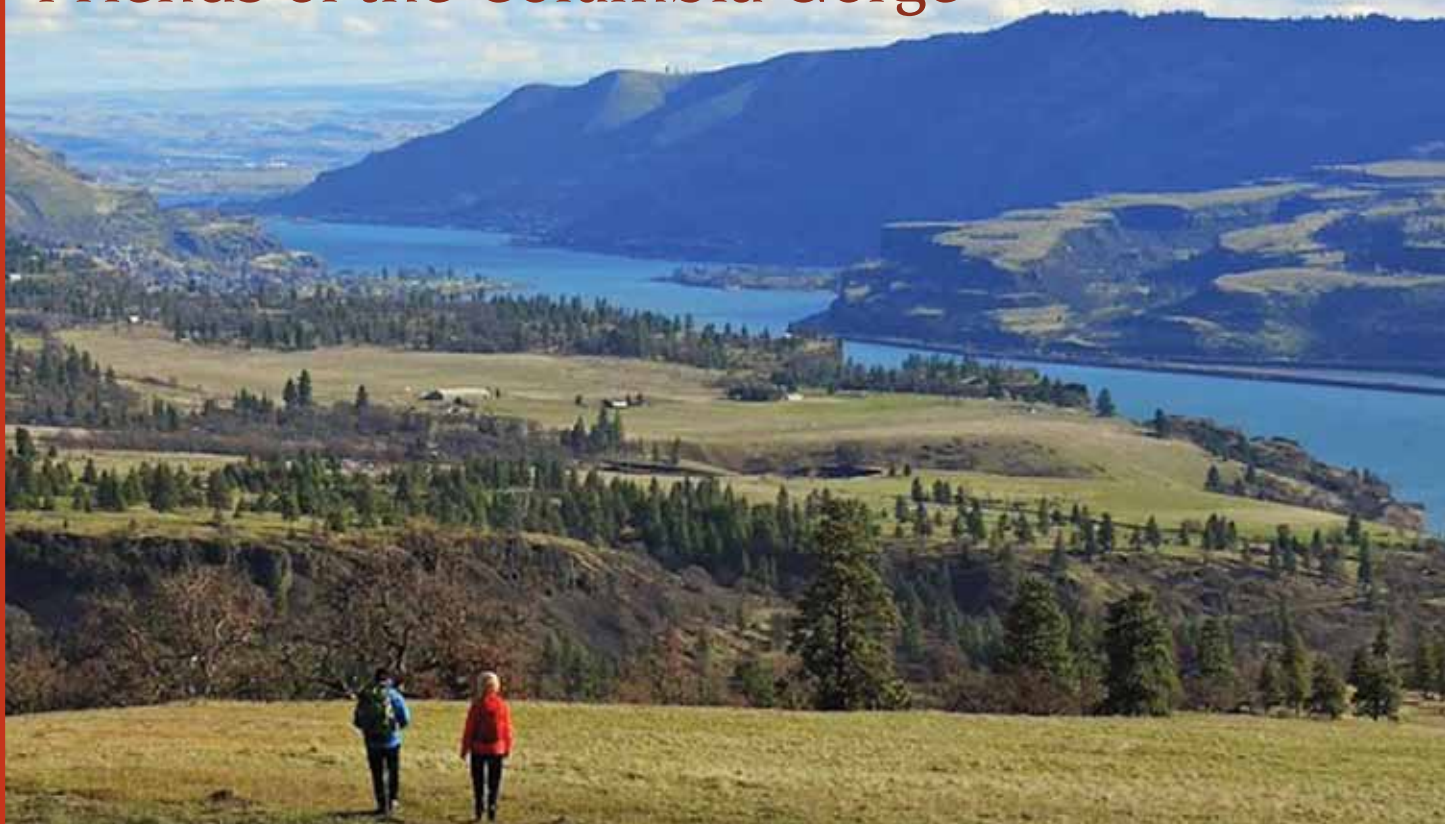
Ironically, as volunteers were leaving the area on that windless day, we all watched the fire raging across the river in Mosier, where the Union Pacific oil train had just derailed. ■



Cutting back tall grasses reduces fire fuel at Lyle Cherry Orchard.

Photo: Kate McBride

Friends of the Columbia Gorge



Hikes, Outings, & Stewardship

Fall 2016

All photos: Debbie Asakawa

Friends of the Columbia Gorge

Working to ensure that the beautiful and wild Columbia Gorge remains a place apart, an unspoiled treasure for generations to come.

Caretakers of the Gorge

Whether hiking with Friends or on your own, we're all caretakers of the Gorge, and we encourage responsible hiking. Stay on the trail, use a trailhead boot brush, and carry out all trash. Leave no traces, take only memories – and photos!

Friends members enjoy early registration for all hikes and outings! Member registration is open now. General registration opens September 1. Register at www.gorgefriends.org/hikes.

Fall Outings

FRIDAY, SEPTEMBER 9

🌲 **Lend-a-Hand Stewardship**

Lyle Cherry Orchard, WA

Kick off the fall hiking season with Stewardship Coordinator Sara Woods. We'll install two boot brushes to help reduce the spread of invasive weeds on this beautiful property. No experience necessary.

SATURDAY, SEPTEMBER 10

🔍 **Mosier Twin Tunnels Bike Ride, OR** **24 miles, 1200-ft elev. gain**

Ride from Hood River to Rowena Crest with Kim Owen on the Historic Highway, through the car-free Mosier Twin Tunnels, past vineyards, orchards, and river views.

🏠 🔍 **Mona Bell Hill and Tales of Tooth Rock, OR**

Easy: 2 miles, little elev. gain

Walk with John Harrison, author of *A Woman Alone*, along a section of Sam Hill's Columbia River Highway and learn about Hill's consort, Mona Bell. An Oregon State Park Ranger will share native and pioneer history and describe Samuel Lancaster's connection to the region.



Photo: Sevenstar, courtesy of Wikimedia

American pika.

See hike on
October 22.

SUNDAY, SEPTEMBER 11

🏠 🍷 **Mosier Plateau, OR**

Easy: 3.5 miles, 600-ft elev. gain

Enjoy panoramic views from the Mosier Plateau with Outreach Manager Maegan Jossy, and learn about this land trust property trail. Optional wine tasting and tour later at Analemma Winery.

White Salmon Rafting, WA

This full-day guided raft trip on the White Salmon River with Wet Planet Whitewater will wind through deep canyons where Condit Dam once blocked the river, then pass through Narrows Canyon and down to the Columbia River. Cost: \$130 incl. gear and lunch.

WEDNESDAY, SEPTEMBER 14

🏠 🐾 **Hardy Creek Dog Hike, WA** **Mod/stren: 7.75 miles, 1330-ft elev. gain**

Dogs are welcome on this hike with leader Jean Akers at Hardy Creek. Enjoy gorgeous views on this dog-friendly climb to the saddle behind Hamilton Mountain.

FRIDAY, SEPTEMBER 16

🔍 🧑🏠 **Bridal Veil Falls and Loop, OR** **Easy: 1.2 miles, 70-ft elev. gain.**

Hear history and tales of Bridal Veil Falls State Park as we hike with Oregon State Park Ranger Dorothy Brown-Kwaiser, from its timber-company past up to today.

SATURDAY, SEPTEMBER 17

🏠 ⭐ **Larch Mtn. to Franklin Ridge, OR** **Strenuous: 8 miles, 2000-ft elev. gain**

Learn forest ecology, tree identification, and characteristics of wilderness on this hike with U.S. Forest Service Ranger Jon Erickson through old-growth forest in the Mark O. Hatfield Wilderness.

⭐ **Pierce National Wildlife Refuge, WA** **Easy: 3 miles, little elev. gain**

Join birder Randy Fortish for a leisurely hike through this beautiful wetland area with oak woodlands and open fields.

🏠 🍷 **Volcano Ridge Vineyard, OR** **Easy: 2 miles, 600-ft elev. gain**

Enjoy this native white oak, ponderosa pine, and bunchgrass habitat, as Volcano Ridge Vineyard owner Alan Busacca describes the grape harvest and environmental practices. Followed by wine tasting. \$20 fee.

SUNDAY, SEPTEMBER 18

🔍 🧑🏠 **Pool of the Winds Falls and Little Beacon Rock, WA**

Easy: 2.5 miles, 500-ft elev. gain

This hike to Pool of the Winds and Little Beacon Rock features an educational scavenger hunt with environmental educator Roland Begin. Learn botany, geology, and history as we hike. Great for the whole family.

🏠 🍷 **Catherine Creek Picnic and Botanical Talk, WA** **Easy: 1 mile, 200-ft elev. gain**

As we stroll to the natural rock arch, botanist Pappy Corbitt will describe medicinal properties of local plants. Wine tasting later at a Syncline Winery. \$10 fee.

Fall 2016 Icons

- 🏠 Members Only
- 🔍 Hike Challenge 9/24–10/31: *Historic Highway Bingo!*
- ⭐ Special Focus
- 🌲 Stewardship
- 🧑🏠 Family Friendly
- 🐾 Dog Friendly
- 🍷 *Trails to Ales Hike & Pub Visit*
- 🍷 *Wiking Hike & Wine Tasting*

TUESDAY, SEPTEMBER 20

🏠 🍷 **Gibbons Creek Wildlife Walk, WA** **Easy: 2.75 miles, no elev. gain**

Learn about birds and trail plans on this easy hike through Steigerwald Wildlife Refuge with *Gorge Towns to Trails* Program Manger Renee Tkach. Later, enjoy a visit to 54-40 Brewery.

WEDNESDAY, SEPTEMBER 21

Nick Eaton Ridge, OR **Strenuous: 10.2 miles, 3100-ft elev. gain**

Climb the rugged Herman Creek trail with Field Representative Peter Cornelison to great Gorge views, as we learn current conservation challenges facing the Gorge.

FRIDAY, SEPTEMBER 23

🏠 🍷 **Petroglyphs and Dancing Rock, WA** **Easy: 2-3 miles, little elev. gain**

Friends board member Jim Chase will lead us to ancient petroglyphs and rock images, including "She Who Watches," and to traces of the Ice Age Floods at Dancing Rock Land Trust property. Optional wine tasting later at Jacob Williams Winery.

SATURDAY, SEPTEMBER 24

Herman Creek Ancient Cedars, OR **Expert: 15 miles, 2600-ft elev. gain**

Hike past sparkling waterfalls and through towering stands of noble fir, hemlock, and Douglas fir with Jim Chase, to a stunning grove of ancient red cedar.

SUNDAY, SEPTEMBER 25

🏠 ⭐ **Watercolor Workshop at Beacon Rock State Park, WA**

Learn watercolor techniques at Beacon Rock in this day-long class with environmental scientist and artist Heather Brunelle. Beginners or advanced painters welcome. No hiking involved.

MONDAY, SEPTEMBER 26

🔍 **Horsetail, Ponytail, and Triple Falls, OR**

Moderate: 4.4 miles, 680-ft elev. gain

Leader Billie Anger will lead this classic Gorge hike to three waterfalls, including one we'll walk behind. Learn local history amid early autumn beauty on this comfortably-paced hike.

WEDNESDAY, SEPTEMBER 28

🍷🔍 **Maple Tree Hike, OR**

Moderate: 4 miles, 600-ft elev. gain

On this hike up the Elowah Falls and Upper McCord Falls trails with Tom Kloster, we'll learn to identify three species of maple trees that are native to the Gorge.

FRIDAY, SEPTEMBER 30

🔍 **Larch Mountain Crater Loop, OR**

Mod/stren: 6 miles, 1100-ft elev. gain

Hike an enchanted old-growth forest with leader Ruth Johnson, out to Sherrard Point, where we'll enjoy views of the Columbia River and five major volcanic peaks.

THURSDAY, OCTOBER 6

🍷🔍 **Lyle Cherry Orchard, WA**

Moderate: 5 miles, 1500-ft elev. gain

Gorge Towns to Trails Project Manager Renee Tkach will guide us up to the old pioneer cherry orchard, sharing trail plans and stories of Sam Hill's historic "Convict Road." Optional wine tasting later at COR Cellars.

FRIDAY, OCTOBER 7

🔍🔍 **Multnomah-Wahkeena Falls, OR**

Moderate: 4.8 miles, 1540-ft elev. gain

Hike this famed waterfall trail lined in fall colors with Outreach Manager Maegan Jossy, past seven cascading waterfalls.

SATURDAY, OCTOBER 8

★ **Gibbons Creek Bird Walk, WA**

Easy: 2.5 miles, no elevation gain

Columbia Gorge Refuge Stewards Dave Pinkernell and Jared Strawderman will share natural and cultural history on this hike at the Steigerwald National Wildlife Refuge, where more than 200 avian species make their homes.

SUNDAY, OCTOBER 9

🔍👤 **Wahclella Falls Salmon Hike, OR**

Easy: 1.8 miles, 300-ft elev. gain

Hike up Tanner Creek to thundering Wahclella Falls with Mary Ann Schmidt on this educational outing to witness fall spawning. Wonderful as a family outing.

🐾🔍 **Sandy River Delta Hike, OR**

Easy: 4 miles, no elev. gain

Enjoy an easy hike at the Sandy River Delta with Bill Weiler of the Sandy River Basin Watershed Council, Jeff Schuh of Friends of the Sandy River Delta, and Courtney Yilk of Confluence. Learn geology, land ethics, and cultural history as we visit architect Maya Lin's Bird Blind. A dog-friendly outing.

THURSDAY, OCTOBER 13

★ **Swale Canyon Bike Ride, WA**

Moderate: 28.5 miles, 1417-ft elev. loss

Ride the old railbed along Swale Creek with Field Representative Peter Cornelison. This one-way ride from Harms Road down to Lyle crosses some rough railroad rock and offers great views of massive rocks, arid landscape, and wildlife habitat. Involves a car shuttle.

FRIDAY, OCTOBER 14

🔍★ **Petroglyph Tour at Columbia Hills State Park, WA**

Easy: .5 mile, 50-ft elev. gain

A quiet walk on Yakama tribal land with leader Judy Todd to view petroglyphs and pictographs including Tsagaglalal, or She Who Watches. Learn historical perspectives and current challenges facing the Gorge.

SATURDAY, OCTOBER 15

🌲 **Lend-a-Hand Stewardship**

Lyle Cherry Orchard, WA

Join Stewardship Coordinator Sara Woods to remove deteriorated wood fences and posts, so wildlife can traverse this land trust property unhindered. No experience necessary.

🔍★ **Wildlife Ecology**

Excursion, OR/WA

Driving Tour with Short Walks

Explore several sites featuring rare wildlife habitat with wildlife biologist Bill Weiler, discussing the threats facing these species, and habitat enhancement. \$20 fee for van rental.

SUNDAY, OCTOBER 16

🔍★ **Sam Hill Tribute Tour, WA**

Driving Tour with Short Walks

Join Executive Director Kevin Gorman for a driving tour and short hikes celebrating Sam Hill. We'll visit the "Convict Road" (precursor to the Historic Columbia River Highway), and the Maryhill Museum grounds and Stonehenge replica, and Hill's unrealized utopian community. Winetasting later at Maryhill Winery. \$20 fee for van rental.

TUESDAY, OCTOBER 18

🔍🔍 **Waterfall Photography at Wahclella Falls, OR**

Easy: 2 miles, 380-ft elev. gain

Beginner photographers will learn basics of slow-shutter waterfall photography using their dSLR or similar digital camera. We'll stop often to learn tricks and techniques with photographers Tom Kloster and Brian Chambers.

SATURDAY, OCTOBER 22

★ **Two Klickitat River Rail-Trail Hikes, WA: Lyle to Fisher Hill Bridge**

Easy: 4 miles, 100-ft elev. gain

Pitt to Fisher Hill Bridge

Mod/Stren: 9 miles, 100-ft elev. gain

Celebrate Klickitat Trail Conservancy's 14th anniversary along the Wild and Scenic Klickitat River. Choose either the easy, short hike, or the longer, more strenuous hike.

SATURDAY, OCTOBER 22

★ **Horsetail Falls Pika Hike, OR**

Easy: 1 mile, 500-ft elev. gain

A Cascade Pika Watch volunteer will lead this hike in Gorge habitat of the American pika, a small alpine creature considered a sensitive indicator of climate change. Citizen scientists are researching Columbia Gorge pika for clues to ways that warming temperatures will impact Gorge species.



*Wahkeena Falls.
See hike on October 7.*

Photo: Oliver Dalton

Register for all events at
www.gorgefriends.org/hikes

SUNDAY, OCTOBER 23

🔍👤 Elowah Falls and Upper McCord Creek Falls, OR

Easy: 4 miles, 600-ft elev. gain

An educational scavenger hunt enriches this hike with environmental educator Roland Begin. Learn local plants, animals, geology, and history. Great for the whole family!

📍🔍 Latourell Falls, OR

Easy: 2.4 miles, 520-ft elev. gain

Hike this loop trail with leader Pappy Corbitt to lower and upper Latourell Falls. Learn about unique floral niches formed by millions of years of geologic activity, tectonic shifts, and the Missoula floods.

SATURDAY, OCTOBER 29

🔍 Multnomah-Wahkeena Loop, OR
Moderate: 4.8 miles, 1540-ft elev. gain

Hike this stunning waterfall trail with Paul Gerald, author of *60 Hikes Within 60 Miles of Portland* and other guides. Paul will share the story of Perdition Trail, wiped out in the 1996 floods, and tales of other trails that interconnect in this beautiful area.

SATURDAY, NOVEMBER 5

🌲 Lend-a-Hand Stewardship
Mosier Plateau, OR

Join Stewardship Coordinator Sara Woods for trail work at the Mosier Plateau, installing directional signs, spreading gravel, and reseeding along the trail. No experience necessary.

Hikes, Outings, & Stewardship

Member Registration is Open!

Register at www.gorgefriends.org. Questions? Contact Outreach Manager Maegan Jossy at 971-634-2028 or maegan@gorgefriends.org.

General Information

- Hike distances listed are round-trip.
- Please note difficulty levels when choosing hikes:

Easy: Up to 3 miles, less than 700 ft. elev. gain

Moderate: Up to 5 miles, less than 1500 ft. elev. gain

Strenuous: Up to 10 miles, up to 2500 ft. elev. gain

Expert: More than 10 miles, steep trail, more than 2500 ft. elev. gain

- Our outings are very popular, so as a courtesy to other hikers, please only register if you're sure you will attend.
- Upon registration, you'll receive a confirmation email with details specific to your outing.
- Children are welcome with a parent or guardian. Please choose hikes appropriate for child's age and ability.
- Participants are responsible for their own safety.
- Dogs are only allowed on hikes with the "dog-friendly" icon; otherwise, please leave pets at home.
- Leave no traces, take only memories – and photos!

Carpool Information

- All outings have carpools from Gateway Transit Center (NE Portland), usually between 8:00 – 9:00 a.m. Details per hike provided upon registration.
- Suggested carpool donation is \$7-\$12 per rider, depending on the outing and distance.


Our hiking program is sponsored by

JOR | JAMES F. O'ROURKE JR. AND ASSOCIATES
JFOLAW.COM

JANUARY/FEBRUARY 2017
★ Winter Bald Eagle Viewing
Easy: 1 mile, 170-ft elev. gain

This is a prime opportunity to watch bald eagles in the Columbia Gorge. A wildlife biologist will describe habits of this iconic species as we view them through spotting scopes. Date and details announced in January.

Bald eagle near the Columbia River.
Photo: Debbie Asakawa



Historic Highway Bingo

Explore the Highway like never before!

🔍 Friends' 2016 hike challenge, September 24–October 31, celebrates the 100th anniversary of the Historic Columbia River Highway. Register now and we'll send you your own bingo booklet.

www.gorgefriends.org/gorgebingo



Horsetail Falls, along the original Columbia River Highway.

The Gorge Needs Best Friends!

Protect the Gorge trails you love **every month of the year** by becoming a monthly donor with a gift of \$10 or more. Keep your membership current, be a friend to the environment, and receive a free waterproof *National Geographic* Columbia Gorge trail map! Visit www.gorgefriends.org/bestfriends to start your monthly donation and receive your special gift.



Participants in our Great Gorge Wahoo program, out on the trail.



Photo: Steve Morgan, courtesy of Wikimedia



We're Moving!

After 12 years in the Yeon Building, Friends has finally outgrown our Portland office. In September, we're moving just down the street to the Oregon Trail Building. Our new address will be:

333 SW Fifth Ave., Suite 300
Portland, OR 97204

Our phone numbers, P.O. Box, and web address will stay the same, and our Hood River and Washougal offices will stay right where they are, so we'll still be easy to find!

Maegan Jossy, Outreach Manager
maegan@gorgefriends.org

38 Ways to Enjoy the Gorge this Fall

Soak up the autumnal beauty of the Gorge on one of our 38 guided outings from September 9 – November 5. Photography walks, a watercolor workshop, *Trails to Ales* hikes, wildlife tours, and so much more! Members can enjoy the benefits of early registration taking place now.

Mist shrouds the Historic Columbia River Highway above Shepperds Dell.

Get your Cameras Ready

Our 2015 photo contest was a huge success. Hiker-photographers from amateurs to pros submitted fantastic shots spanning the Columbia Gorge from east to west. So we're doing it again. This year's contest will be an autumn timeframe with a narrower focus, in conjunction with our *Historic Highway Bingo* hike challenge. Visit www.gorgefriends.org/photocontest for full details.

Photo: Djambel Unkov, participant in our 2015 Photo Contest



Historic Highway Bingo:

Explore the highway like never before!

Friends' 2016 hike challenge, September 24 – October 31, celebrates the 100th anniversary of the beautiful Historic Columbia River Highway. Register now at www.gorgefriends.org/gorgebingo and we'll mail you your bingo booklet.

Save these Dates for Gorge on Tap

September 22 in The Dalles at Freebridge Brewing

November 16 in Portland (exact location: TBA)

Join this free quarterly event. Friends is traveling to communities in and around the Columbia Gorge to provide updates on conservation issues and recreation programs.





The Forest Service’s conservation easement protects scenery along the forested ridgeline of this pastoral landscape across from Crown Point.

Photo: Ken Denis

Friends Defends Conservation Easement in Federal Court

Nathan Baker, Senior Staff Attorney, nathan@gorgefriends.org

Friends has once again prevailed in a long-standing dispute over a proposal to develop a 109-acre property in western Skamania County. The property is located in the rural Mount Pleasant landscape, directly across the Columbia River from Crown Point. The U.S. Forest

Service acquired a conservation easement on the property in 1988, paying the former landowner nearly two-thirds of the property’s appraised value in exchange for permanent development restrictions that protect agricultural and scenic resources on the property.

The current landowner, GLW Ventures, LLC, seeks to adjust parcel boundaries and ultimately build two new dwellings on the property. However, GLW’s proposal violates both the Skamania County zoning requirements and the Forest Service’s conservation easement.

In prior litigation, the Skamania County Superior Court rejected GLW’s proposal as unlawful and inconsistent with the zoning rules and conservation easement. Undeterred, GLW immediately turned to federal court, litigating two federal lawsuits against the Forest Service and arguing that the conservation easement should be rescinded. Friends and the Columbia River Gorge Commission intervened in the federal litigation to assist the Forest Service in defending against GLW’s claims.

On June 17, the federal district court issued a written decision dismissing both of GLW’s federal lawsuits. The court emphasized the importance of upholding the conservation easement, noting that to rescind the easement “would defy the Gorge Act’s objectives, leaving the area’s resources vulnerable.” This ruling will likely serve as useful precedent for other properties in the National Scenic Area protected by conservation easements. ■

LOTS More Trains through Mosier

Steve McCoy, Staff Attorney, steve@gorgefriends.org

As Union Pacific trains once again roll through Mosier, the railroad persists in its quest to add a parallel mainline track through Mosier, extending east and west of the small town. Union Pacific claims that, since it would be able to run longer trains through the Gorge, the double track would not increase the number of trains running on its tracks. At the same time, the railroad acknowledges that the single track through Mosier is the

biggest train bottleneck in the Pacific Northwest and that the new track would accommodate five to seven more trains per day through the area at peak usage.

Friends retained well-known railroad experts Terry Whiteside and Gerald Fauth III to check Union Pacific’s math and prepare testimony to submit to the Wasco County Planning Commission on their findings. In stunning comments to the Planning Commission, they revealed

that instead of five to seven additional trains per day, removing the bottleneck through Mosier could provide capacity for an additional 45 to 63 trains per day. That could mean as many as two to three additional trains *per hour* running through Mosier and sensitive areas of the Gorge.

At the same time, Union Pacific has uncustomarily asked the County to slow down the permitting process, presumably preferring to delay the decision until the

Comments Against Millennium Coal Terminal Set New Record

Ryan Rittenhouse, Conservation Organizer, ryan@gorgefriends.org

June 13 marked the end of the 45-day comment period for the Draft Environmental Impact Statement (DEIS) of the proposed Millennium coal terminal in Longview, Washington. In just over seven weeks, some 2,000 people attended public hearings on the proposal in Cowlitz County,

Pasco, and Spokane. The Power Past Coal coalition submitted 263,000 public comments opposing Millennium – an all-time high number of comments to the Department of Ecology for any project of this kind. Opposition to the Millennium proposal topped even the previous comment record, set by the campaign against

the Vancouver oil terminal, a campaign that itself had shattered all previous records with 261,000 comments.

Friends members and volunteers played a vital role in these efforts, providing unique and powerful voices at the hearings by specifically addressing impacts to the Gorge, our communities, and the environment. Joining us and the rest of the Power Past Coal Coalition member groups were numerous tribes, municipalities, elected officials, experts, and other organizations.

Evidence against the terminal included a study by Dr. Dan Jaffe of University of Washington on coal dust deposits and pollution from trains passing through the Columbia River Gorge. Jaffe's research found that coal trains release twice as much particulate matter as freight trains. Dr. Jaffe also submitted comments that outlined several deficiencies in the coal dust analysis presented in the DEIS. Coal dust is already polluting the Gorge, and the increase in coal train traffic from the proposed Millennium terminal would cause significant further harm to the environment and public health.

Millennium is the last remaining coal terminal proposal out of six terminals proposed in the past seven years throughout Oregon and Washington. The rest have either been denied or withdrawn. With the continued support of our members and activists we are confident that this terminal will be defeated as well. ■

Photo: Ryan Rittenhouse



Activists turned out to oppose the proposed Millennium coal terminal in Longview, Washington.

emotions about the Mosier derailment and fire have died down and the press has turned its attention to other topics. Friends has already submitted two rounds of comments on the rail expansion proposal and we will continue to fight this project doggedly. We are gearing up for the rescheduled hearing, which is now set for September 6 at 3:00 p.m., at the Columbia Gorge Discovery Center in The Dalles. ■

Photo: Brent Foster



A Union Pacific train passing charred oil cars, just days after the Mosier derailment.

Kate Harbour, Membership Coordinator, kateh@gorgefriends.org

Honoring the Gorge and a Family Legacy

When Mary Dickson started a charitable gift annuity with Friends, she was drawn in large part to the practical benefits – easy to set up, tax benefits, and a steady predictable income. But the story of Mary’s transformative gift starts decades ago with a very special person.

When Mary graduated from high school, her aunt gave her several shares of stock. Her aunt, who was the first woman to graduate from Northwestern

University with a degree in economics, also gave Mary some strong advice: always reinvest the dividends, unless there’s something really important to you. She honored her aunt’s words, only taking out funds for graduate school and other unique opportunities.

When Mary retired, she was weighing what to do with the stock, which had appreciated greatly through the years. The choice was simple: “I wanted to invest in something I believe in.” Over the years she



Photo: Courtesy of Mary Dickson

Mary Dickson

had fallen in love with the Gorge and its waterfalls. A charitable gift annuity with Friends met her practical needs and felt like a fitting tribute to her aunt and their time together in the Gorge marveling at its beauty.

Thank you, Mary, for including Friends in your plans. We know your aunt would be proud!

To find out more about charitable gift annuities or estate planning, contact Pam Davee at pam@gorgefriends.org or by phone at 971-634-2036.

EarthShare Oregon lets you support the Gorge at work!

Friends is part of EarthShare of Oregon, an environmental federation that makes it easy for Oregonians to donate to their favorite nonprofits through their workplace.

Friends member Leah Teixeira uses EarthShare’s workplace giving to bring her love of the Gorge to the office. She’s a volunteer and an avid hiker who loves taking in the big Gorge views on trails like Hamilton Mountain and Angels Rest.

When she’s not hiking, Leah works for the Port of Portland, and she

recently shared why donating through EarthShare works for her:

“I only have to make an election once a year and my workplace does the rest. It’s beyond easy and convenient! I also hope that by donating to Friends of the Gorge through work it will create some awareness of the organization.”

To learn more about EarthShare and how to give through your workplace, email meghan@earthshare-oregon.org or call EarthShare at 503-223-9015.

Friends member and EarthShare donor Leah Teixeira.

Photo: Kate Harbour



Special Gifts

April 29 – July 21, 2016

IN HONOR OF BOB AND BARBARA BAILEY
DAVID POLLOCK

IN HONOR OF STUART CHAPIN
DA AND MEREDITH HILDERBRAND

IN HONOR OF JIM CHASE
GAIL TOOKER

IN HONOR OF MEREDITH SAVERY
CAITLIN SAVERY SZIEFF AND BEN SAVERY

Starvation Creek.

Photo: Warren Morgan

Featured Hike:

Historic Highway State Trail

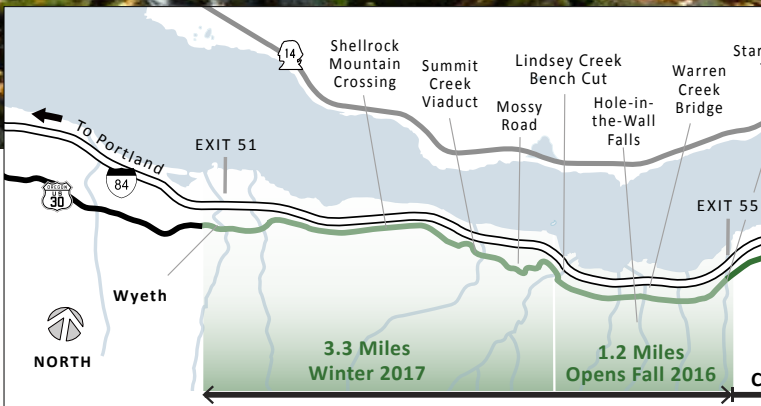
New section opens September 24!

Maegan Jossy, Outreach Manager,
maegan@gorgefriends.org

Much of this year, construction has been underway between Starvation Creek and Lindsey Creek, near Exit #55 on I-84. You may have noticed roadwork and trail closures in that area. But that's all coming to an end September 24, when the trail will be dedicated. The public is welcome to attend and the new, car-free, 1.2 mile section of the Historic Columbia River Highway will be open.

The design of this paved trail mimics the graceful design of the highway as it was constructed 100 years ago, with stone walls, a new bridge over Warren Creek, overlooks, and picnic areas. It's a perfect spot for a picnic by a waterfall and a short hike chock full of history. Cabin Creek Falls, Hole-in-the-Wall Falls, and Lindsey Creek Falls can all be easily accessed on this new trail, as well as more strenuous hikes to Warren Lake, Mount Defiance (the highest point in the Scenic Area), and the moderately difficult Starvation Creek Ridge loop hike. Learn more at www.gorgefriends.org/lindseycrktrails

Directions: Driving east on I-84, take Exit #55 Starvation Creek State Park and Rest Area (eastbound exit only). Traveling west on I-84, continue past Exit #55 to Exit #51/Wyeth and return east.



On September 24, the 1.2 mile stretch of the Historic Highway Trail shown here will open to the public. Map courtesy of Oregon Dept. of Transportation

Shepperds Dell. Photo: Oliver Dalton

IN HONOR OF KALANI UNDERWOOD
R. LEE UNDERWOOD III AND CHRISTINE UNDERWOOD

IN MEMORY OF OLIVER DALTON
SANDI AND TOM ROUSSEAU

IN MEMORY OF WILL GEROULD
KATHY FISKUM

IN MEMORY OF JERRY GIESY
SALLY FARNES

IN MEMORY OF LOUISE GODFREY
KYRA M. MACILVEEN

IN MEMORY OF LARRY HILDERBRAND
DONALD AND SHIRLEY CLARK

IN MEMORY OF DAVID LIFTON
EDWARD McNAMARA AND ANDREA VARGO

IN MEMORY OF HANNAH MAY
PATRICIA TOCCALINO

IN MEMORY OF MARGARET AND JOE MILLER
PHYLLIS CLAUSEN

IN MEMORY OF BUDDY NOBLES
CARRIE NOBLES

IN MEMORY OF ELWYN CHARLES ROGERS
MARTHA AND SCOTT RICHARDSON

IN MEMORY OF TWILA ROTHROCK
GLORIA LADUM

IN MEMORY OF NANCY RUSSELL
SANDI AND TOM ROUSSEAU

IN MEMORY OF DAVID ROBERT TOLLESON
VIRGINIA HERNDON AND CHARLES HERNDON-BAKER

IN MEMORY OF MATTHEW WINTHROP
KATHERINE GIORDANO



Nonprofit Org.
U.S. Postage
PAID
Portland, OR
Permit No. 2623

Friends of the Columbia Gorge

P.O. Box 40820
Portland, Oregon 97240-0820

Know Your Gorge *The Lindsey Inn*

From 1916 until 1943, the Lindsey Inn nestled in the woods beside Lindsey Creek on the Columbia River Highway, over-looking the Columbia River. Named after Lindsey Creek – which in turn was named after John Lindsey, an early homesteader – the Inn was 56 miles east of Portland and 12 miles west of Hood River, not far from Starvation Creek.

Wood smoke wafting from the fireplace chimneys on chilly, damp days drew visitors into an inviting space where they could dine on country dinners of trout, salmon, game, or fried chicken, topped off with ice cream for dessert. The warm dining room and ample hot meals no doubt hit the spot for locals out enjoying a Sunday drive as well as travelers undertaking long trips in their automobiles.

Sadly, the Lindsey Inn was torn down during World War II to make way for the new interstate highway that was being built through the Gorge. Not a trace is left.

But this fall, there is much to celebrate in this area. In late September, a newly restored 1.2-mile, car-free section of the Historic Columbia River Highway State Trail will open for the public to enjoy. The paved trail will temporarily terminate at Lindsey Creek, close to the site of the old inn.

In winter, trail construction will resume, to extend the Historic Highway State Trail 3.3 miles west beyond Lindsey Creek, connecting it to the trail in Wyeth. When the full restoration is complete, projected for 2018, this additional five-mile section of car-free trail will provide a wonderful way to experience the Gorge on foot or bike. ■

This year marks the opening centennial of the Historic Columbia River Highway. We will feature additional Historic Highway stories during the year. Visit www.historichighway.org for centennial information.

Lindsey Inn, circa 1930.

Photo: Courtesy of Oregon Dept. of Transportation

