

R. 5. E.

R. 6. E.

R. 7. E.

R. 7.5 E.

R. 8. E.

R. 9. E.

T. 3. N.

T. 2. N.

T. 1. N.

T. 1. N.

T. 1. N.

T. 1. S.

T. 1. S.

T. 2. S.

T. 3. N.

T. 2. N.

T. 1. N.

T. 1. N.

T. 1. N.

T. 1. S.

T. 1. S.

T. 2. S.

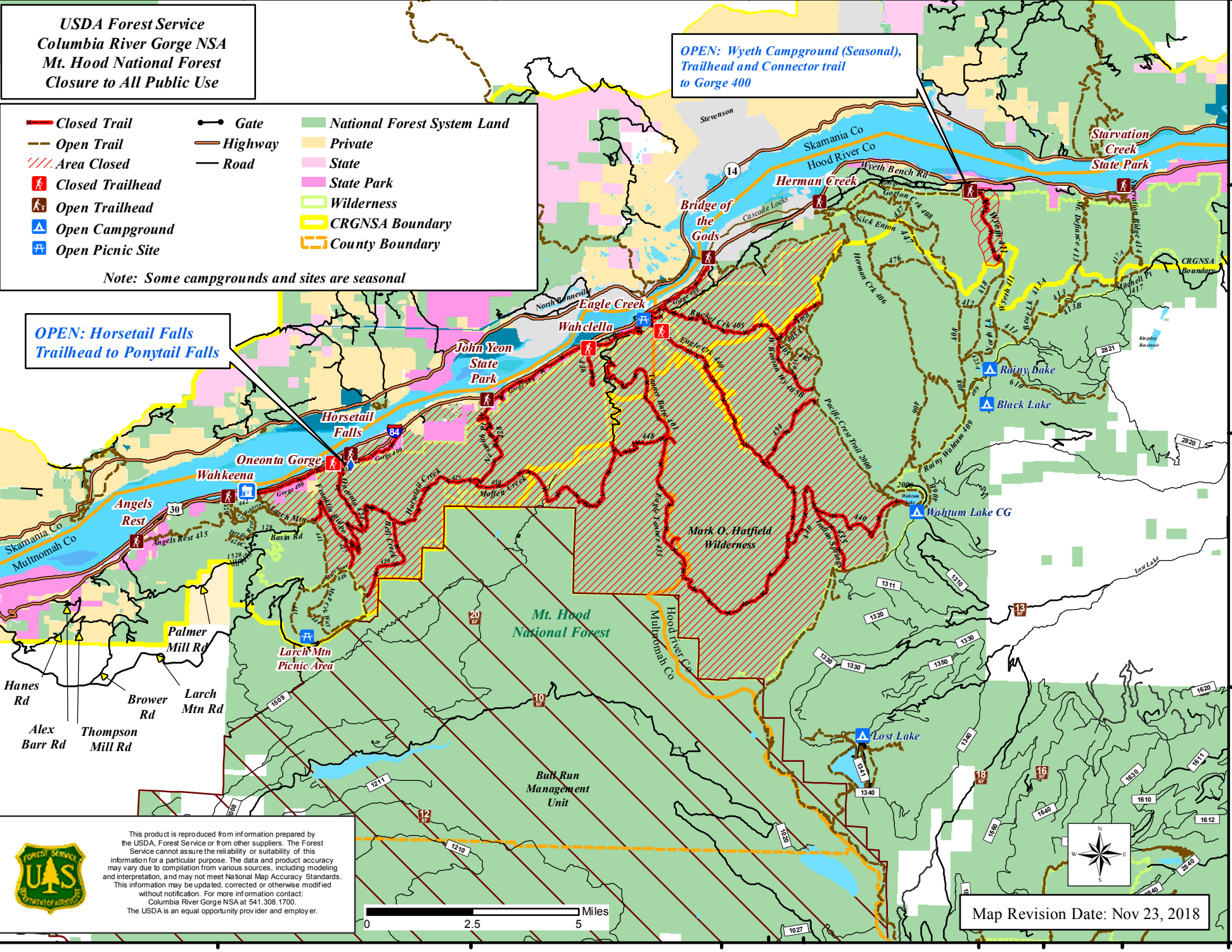
**USDA Forest Service**  
**Columbia River Gorge NSA**  
**Mt. Hood National Forest**  
**Closure to All Public Use**

**OPEN: Wyeth Campground (Seasonal),  
 Trailhead and Connector trail  
 to Gorge 400**

|  |  |  |
|--|--|--|
|  |  |  |
|  |  |  |
|  |  |  |
|  |  |  |
|  |  |  |
|  |  |  |
|  |  |  |

*Note: Some campgrounds and sites are seasonal*

**OPEN: Horsetail Falls  
 Trailhead to Ponytail Falls**



This product is reproduced from information prepared by the USDA, Forest Service or from other suppliers. The Forest Service cannot assure the reliability or suitability of this information for a particular purpose. The data and product accuracy may vary due to compilation from various sources, including modeling and interpretation, and may not meet National Map Accuracy Standards. This information may be updated, corrected or otherwise modified without notification. For more information contact: Columbia River Gorge NSA at 541.308.1700. The USDA is an equal opportunity provider and employer.

Map Revision Date: Nov 23, 2018

R. 5. E.

R. 6. E.

R. 7. E.

R. 8. E.

R. 8.5 E.

R. 9. E.