

Friends of the Columbia Gorge

Protecting the Gorge Since 1980

Spring 2011 Newsletter

Inside:

Support Public
Land Acquisition

Page 2



25 Years of
Gorge Protection

Page 4



Energy
Development
Challenges the
Gorge

Page 8

Friends of the Columbia Gorge

FOUNDER NANCY RUSSELL, 1932-2008

BOARD OF DIRECTORS

MARIA HALL *CHAIR*
KEITH BROWN* *VICE CHAIR*
KAREN JOHNSON *SECRETARY/TREASURER*
RICK RAY* *AT-LARGE MEMBER*
CYNTHIA WINTER* *AT-LARGE MEMBER*
CHARLIE WEBSTER *AT-LARGE MEMBER*
CHRIS BECK
BROUGHTON H. BISHOP
KEN DENIS
BOB HANSEN*
ERIC LICHTENTHALER*
ROBERT MATTERI
AUBREY RUSSELL
PAT WALL
MARK WALLER
POLLY WOOD*

FRIENDS OF THE COLUMBIA GORGE LAND TRUST

BOARD OF TRUSTEES

AUBREY RUSSELL *PRESIDENT*
BOB HANSEN* *SECRETARY/TREASURER*
JIM DESMOND
DUSTIN KLINGER
CHRISTINE KNOWLES*
RICK RAY*

STAFF

NATHAN BAKER *STAFF ATTORNEY*
JUSTIN CARROLL *GRANTS & CONTENT SPECIALIST*
PETER CORNELISON* *FIELD REPRESENTATIVE*
ANNA GILBERT *CONSERVATION ORGANIZER*
KEVIN GORMAN *EXECUTIVE DIRECTOR*
MAEGAN JOSSY *OUTDOOR PROGRAMS COORDINATOR*
MICHAEL LANG *CONSERVATION DIRECTOR*
MARILYN LIPKO *DEVELOPMENT ASSISTANT*
KATE MCBRIDE* *LAND TRUST MANAGER*
RICK TILL *CONSERVATION LEGAL ADVOCATE*
SANDY WRIGHT *DEVELOPMENT DIRECTOR*

* GORGE AREA RESIDENTS

ADDITIONAL SUPPORT

LEGAL COUNSEL: GARY KAHN
NEWSLETTER DESIGN: KATHY FORS AND
KATHLEEN KRUSHAS / TO THE POINT PUBLICATIONS
PUBLICATIONS EDITOR: BETSY TOLL

PORTLAND OFFICE

522 SW FIFTH AVENUE, #720, PORTLAND, OR 97204
(503) 241-3762

GORGE OFFICE

205 OAK STREET, #17, HOOD RIVER, OR 97031
(541) 386-5268



Member of
EarthShare
Oregon

Link to us on Twitter and Facebook
from our website: www.gorgefriends.org

*A spectacular view from upper Catherine Creek, on public land
protected by the U.S. Forest Service. Photo: Don Jacobson ©Donjacobsonphoto.com*



Take Action Today!

Public Lands Funding

Every year, more land in the Columbia River Gorge National Scenic Area is protected thanks to the federal Land and Water Conservation Fund (LWCF). This program provides funds for state and federal agencies to acquire land from willing sellers for parks and trails, fish and wildlife, and to ensure that significant national landscapes are preserved for future generations.

Many iconic Columbia Gorge landscapes have been protected with LWCF funds, including Cape Horn, Franz Lake, Table Mountain, Catherine Creek, Tom McCall Point, Memaloose Hills, and Burdoin Mountain.

During this 25th-anniversary year of the Scenic Area Act, Friends of the

Columbia Gorge, along with our allies and supporters, is fighting to ensure Congressional support for LWCF. To date, we have sent 1,400 letters to Congress urging full support of the program.

We applaud Oregon's Senator Ron Wyden for defending LWCF during budget negotiations. Senator Wyden's eloquent letter to Senate leadership emphasized "America's long bi-partisan tradition of protecting land and water for people and nature."

Please take action! Contact your Congressional delegates today (see below) to urge full support of LWCF. Tell them that LWCF funds are vital to securing permanent protection for treasured landscapes in the Columbia River Gorge.

Citizen action makes the difference! Your actions for Gorge protection are crucial to our success. Contact your Senators and Representatives using the information below, or check www.senate.gov or www.house.gov for other offices.

Oregon

Sen. Ron Wyden, (202) 224-5244
<http://wyden.senate.gov/contact/>
Sen. Jeff Merkley, (202) 224-3753
senator@merkley.senate.gov
Rep. David Wu, (202) 225-0855
Rep. Earl Blumenauer, (202) 225-4811
Rep. Greg Walden, (202) 225-6730
Rep. Peter DeFazio, (202) 225-6416
Rep. Kurt Schrader, (202) 225-5711

Washington

Sen. Patty Murray, (202) 224-2621
<http://murray.senate.gov/email/index.cfm>
Sen. Maria Cantwell, (202) 224-3441
<http://cantwell.senate.gov/contact/>
Rep. Jamie Herrera Beutler, (202) 225-3536
Rep. Norm Dicks, (202) 225-5916
Rep. Doc Hastings, (202) 225-5816
Rep. Jay Inslee (202) 225-6311

Email your **Congressional Representative** by logging on to www.house.gov/writerep/

Cover photo: Looking north from Oregon, Hood River Mountain rises on the left, with Burdoin Mountain mid-ground, below Mount Adams. Photo: James Holloway

Director's Letter

Nobody loved buying land in the Gorge, or talking about buying land in the Gorge, more than Friends founder Nancy Russell.

In the last decades of her life, Nancy purchased thirty-three Gorge properties, from small wooded parcels in the west to expansive open-range pieces further east. She sold eleven of those properties to public agencies, then bought more land with the proceeds and donated the remaining lands to Friends of the Columbia Gorge Land Trust.

Nancy was a frugal person by nature. She rarely took vacations and was perfectly content with the same car, same clothes and same home for decades. But when it came to buying land in the Gorge, her passion overrode frugality. Land purchases could save the Gorge, so what would she rather do? Like a parent who will do anything to save their child, Nancy was willing to do anything to save the Gorge.

Celebrating the 25th-anniversary year of the Columbia River Gorge National

Scenic Area, this issue of our newsletter is dedicated to the public land acquisition efforts that have shaped, and in some places saved, the Gorge. Subdivisions have been stopped, recreation opportunities created, and habitat preserved. Thanks to these purchases, many of the jaw-dropping landscapes the Gorge is famous for have remained unspoiled.

“I’m cheap with everything but land!”

– Nancy Russell

In the past twenty-five years, incremental and cumulative efforts by Nancy Russell, the Trust for Public Land, the U.S. Forest Service, and other conservation buyers have protected more than 40,000 acres in the Gorge. Visualize Portland’s expansive Forest Park, and then multiply it eight-fold. That’s how much Gorge land has been protected by land acquisition in the last quarter century.



During that same time, however, we have also seen more than 1,000 new houses built, along with increasing proposals for commercial and industrial development.

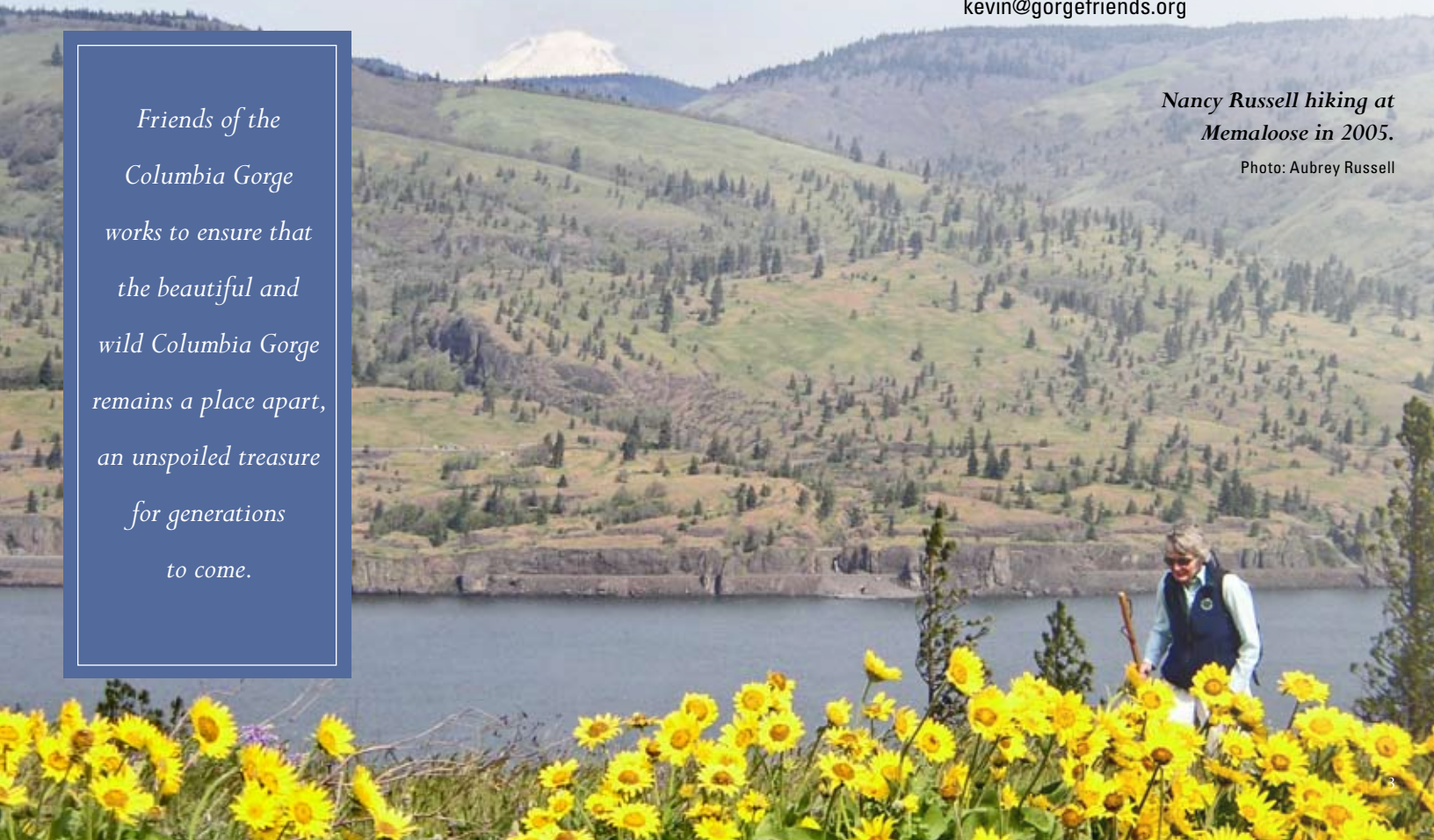
Those two powerful forces in the Gorge – protection and development – will race headlong into the next quarter century, competing for the last of the Gorge’s undeveloped, unprotected lands. How that race ends depends on all of us.

Kevin Gorman
Executive Director
kevin@gorgefriends.org

Nancy Russell hiking at Memaloose in 2005.

Photo: Aubrey Russell

Friends of the Columbia Gorge works to ensure that the beautiful and wild Columbia Gorge remains a place apart, an unspoiled treasure for generations to come.





How Land Acquisition Saved the Columbia Gorge

Kevin Gorman, Executive Director, kevin@gorgefriends.org

When President Reagan signed the Columbia River Gorge National Scenic Area legislation in November 1986, his signature set in motion a chain reaction still playing out in the Columbia Gorge today. The Scenic Act established the Columbia River Gorge Commission with a mandate to create a Gorge-wide land use plan. Restoration of the Historic Columbia River Highway was a priority, and initial funding was also written into law to develop what would eventually become Skamania Lodge and the Columbia Gorge Discovery Center.

But the stroke of Reagan's pen also triggered what may well be the most tangible, measurable benefit of the Columbia River Gorge National Scenic Area Act: the purchase of land from willing sellers into public ownership for conservation purposes.

Since that time, more than 40,000 acres have been acquired by public agencies. These purchases have preserved iconic landscapes, habitat corridors for flora and fauna, and Native American cultural sites. Multiple acquisitions have resulted in restoration of the Historic Columbia River Highway as well as new recreation opportunities at Catherine Creek, Cape Horn, and Dalles Mountain. In fact, more than half of the 80-plus annual hikes led by Friends of the Columbia Gorge are in areas that were not open to the public in 1986.

The National Scenic Area Act set the wheels in motion, but the legislation was just a starting point. Getting from that point to where we are today required vision, courage, and dedicated persistence from countless individuals, organizations, and public agencies.

Setting the stage

As Friends of the Columbia Gorge began pushing for protective federal legislation in the early 1980s, the need to include a strong land acquisition component in the Gorge legislation was hotly debated. Friends was certain that a land-use zoning overlay would not stop development threats, it would only manage them, and not always effectively. Opponents of acquisition argued that the federal government would pursue condemnation of land via eminent domain and the Gorge would soon go the way of Appalachia.

Friends founder and board chair Nancy Russell understood the value of public acquisition and began working with the Trust for Public Land (TPL), a national land trust that sells land to public agencies and then uses the proceeds to buy more land to be protected. Anticipating the federal legislation,

Over the next 25 years, public land acquisition will continue to play a pivotal role in Gorge protection.

Nancy and Bruce Russell provided TPL a \$300,000 no-interest loan to purchase important properties in the Gorge. The Meyer Memorial Trust then stepped up with a no-interest \$600,000 revolving loan fund, which would eventually help leverage more than \$35 million in acquisitions.

At that early point, the Scenic Area Act had not yet passed, but at Nancy’s urging TPL used those funds to buy twelve of the sixteen Rim View Estates lots being sold for development at Cape Horn. That purchase effectively blocked the proposed Rim View Estates subdivision high above the river. Eventually, the Forest Service purchased those parcels from TPL, and today that land is a signature part of the Cape Horn trail.



Waterfalls at Catherine Creek. Photo: Greg Lief / Liefphotos.com

Senator Mark Hatfield

In October 1986, with strong support from Oregon Senator Mark Hatfield, Congress passed the Columbia River Gorge National Scenic Area Act. Over the next fifteen years, the Trust for Public Land would purchase nearly 100 properties totaling more than 17,000 acres. Today, almost all that land is owned by the U.S. Forest Service.

Trust for Public Land never could have done its outstanding work without Senator Hatfield’s support. As chair of the powerful Senate Appropriations Committee, Hatfield was pivotal in ensuring that important Gorge lands could be purchased.

The U.S. Forest Service

The U.S. Forest Service worked with TPL on many of its early purchases, but also worked directly with landowners to secure Gorge lands. A great example is the Starr property, just west of the Klickitat River. This property, complete with a gravel pit, junked cars, and even a pen with buffalo,

was an eyesore for miles around, and the Forest Service listed it as a priority acquisition. Friends supported the acquisition, although some local conservationists were opposed, as they felt the property had no habitat value.

After purchase and a long clean-up process, in 2004 the Forest Service opened public access to that property, now known as the Balfour Klickitat Day Use Area. Today, the property is the wintering site of the largest concentration of bald eagles within a 100-mile radius of the Portland/Vancouver metropolitan area.

Looking ahead

Over the next 25 years, public land acquisition will continue to play a pivotal role in Gorge protection. While large purchases were crucial in the first quarter century, key “must have” properties are needed in the coming years to ensure perpetual habitat corridors for wildlife and connections for new trails for future generations. Our next newsletter will detail Friends’ vision and our next steps to help make that happen. ■

Honoring Nancy Russell

This August, Friends will dedicate an overlook at Cape Horn in honor of Nancy Russell (see page 7), sited on the one Rim View Estates subdivision lot that was actually developed with a cliff-top house. In 2006, Friends of the Columbia Gorge Land Trust purchased that property and dismantled and removed the house.

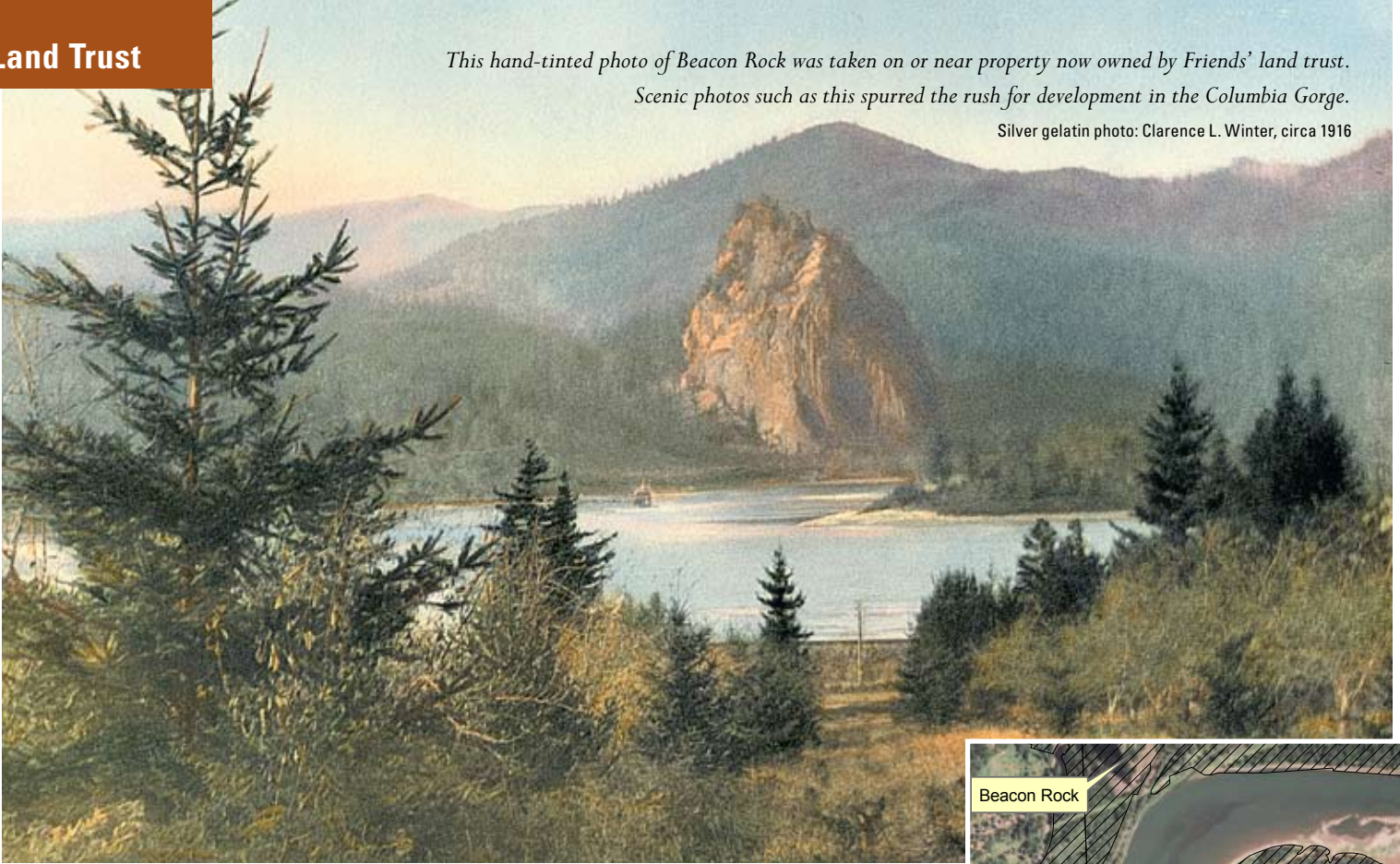
Proposal	Where	Acreage	Outcome
1981 – Rim View Estates 16-lot subdivision	Top of Cape Horn	45	Purchased by Trust for Public Land, part of Cape Horn Trail (U.S. Forest Service)
1982 – Rizer 24-lot subdivision	Across from Multnomah Falls	60	Purchased by Trust for Public Land, now Forest Service land
1983 – Hidden Harbor 83-lot subdivision	Across from Horsetail Falls	78	Purchased by Trust for Public Land, now Sams Walker Day Use Area (Forest Service)

The Subdivisions That Never Were

Prior to passage of the Columbia River Gorge National Scenic Area Act, Friends of the Columbia Gorge worked with the Trust for Public Land using litigation, advocacy, and eventually land acquisition to stop three subdivision proposals that would have dramatically altered the Gorge landscapes we know today.

*This hand-tinted photo of Beacon Rock was taken on or near property now owned by Friends' land trust.
Scenic photos such as this spurred the rush for development in the Columbia Gorge.*

Silver gelatin photo: Clarence L. Winter, circa 1916



“Ancient Subdivision” Land Now Protected

Kate McBride, Land Trust Manager, kate@gorgefriends.org

At barely more than an acre and a half, the property owned by Friends of the Columbia Gorge Land Trust in the Dodson-Warrendale area is our smallest property. But despite its size, this parcel looms large in the story of the Gorge development rush that occurred 100 years ago and revived itself over the past decade.

During the early 1900s, construction on the Historic Columbia River Highway was underway, triggering plans for subdivisions and development on both sides of the Gorge. One of the largest proposals slated for the Oregon side was called the “Ellahurst subdivision,” renowned for its stunning location directly across from Beacon Rock, which the developers touted in their promotional materials.

The Ellahurst project was envisioned right along the Columbia River Highway, between the base of the Gorge face and the river. Fortunately it never got off the ground, and eventually Multnomah County

designated the area that had been slated for the subdivision as a “geohazard” zone, due to its potential for landslides. The designation proved prophetic in February 1996, when heavy rains and significant warming caused massive mudslides in the area. A nearby house was swept away in the slide, finally coming to rest just a few hundred yards from Interstate 84, where its broken frame still lies afloat today.

Nearly 100 years after the Ellahurst subdivision was planned, the property was still zoned for residential purposes, carrying the risk that it could be logged and developed. In 2005, Friends founder Nancy Russell bought the 1.6-acre parcel that had been coveted for development, and bequeathed the property to Friends of the Columbia Gorge Land Trust.

In 2009, the Forest Service bought the remaining parcels of Ellahurst land. Nancy’s acquisition, combined with the Forest Service’s purchase, effectively stopped



Hash marks show protected land surrounding land trust property (in red) across from Beacon Rock.

Map: Created by Kate McBride

any possibility that the Ellahurst “ancient subdivision” would ever be developed.

Across the river in Washington, plans to develop several lots within another “ancient subdivision” are currently in litigation. Friends of the Columbia Gorge is helping defend Skamania County’s and the Gorge Commission’s rejection of this unlawful development plan. We will report on it further in a future newsletter. ■

Gorge View Bed & Breakfast

Peter Cornelison, Field Representative, peter@gorgefriends.org

Windsurfer Pat Frodel opened Gorge View Bed & Breakfast in Hood River in 1985, and since then, windsurfing stars like Robbie Naish, Nevin Sayre, and Peter Cabrinha have been regular guests.

In 1988, Pat's life changed when a lovely guest named Ann Van Dlac came to Gorge View. Ann and Pat were married in 1991, and Ann has helped the Gorge View, a 1917 Edwardian home, evolve from a "garage-sale-meets-Animal-House" establishment into a welcoming accommodation where guests enjoy fresh Gorge produce in their breakfast fare.

Pat and Ann actively support Gorge community life. Ann is now in her second term on the Hood River City Council and serves as chair of the Waterfront Community Park Association. Over the years, both Ann and Pat have written letters to support protection of the wild and scenic Gorge.

"People have to remain vigilant and do our part to preserve what we love," said Ann recently. "The National Scenic Act that protects the Gorge also contributes to the tourist economy."

Ann and Pat Frodel know that the

Outreach and Activities

Photo: Peter Cornelison



Gorge View's Ann Frodel.

Gorge's exceptional beauty is the heart of the Gorge experience for guests that come from around the country to Gorge View B&B. See www.gorgeview.com for more information. ■

A New Face at Friends

This spring, Friends welcomed Anna Gilbert as our new conservation organizer. With strong environmental outreach and campaign experience, Anna most recently served as field director for Bob Stacey's campaign for Metro President. She loves spending time in the wilderness and wide-open spaces, from working in Glacier National Park to biking cross-country from Florida to California.

Since her first visit to Oregon, Anna has been inspired by the unique balance of breathtaking beauty and robust small communities along the Columbia River. She is thrilled to be an advocate for Gorge protection, and we're delighted to have her on board.

Photo: Justin Carroll



Stewardship Dates at Cape Horn

Join us on National Trails Day, June 4, to work on the path connecting the Cape Horn trail to the new overlook. In July and October we will remove invasive species and replant native plants in the overlook area. To register for these stewardship events, visit www.gorgefriends.org/hikes.

More information about Cape Horn and Friends' campaign to protect it is on our website at www.gorgefriends.org/campaignforcapehorn.

A rendering of the Nancy Russell Overlook, which will be dedicated at Cape Horn later this year.

Sketch: Courtesy of Walker Macy

Nancy Russell Overlook at Cape Horn

This spring, a flurry of activity at the top of Cape Horn will complete site preparation for the Nancy Russell Overlook. Nancy was inspired by the stunning views along the Cape Horn Ridge, and she was determined that those views would always be open to the public. In 1984, to ensure that public access would be protected, Nancy helped the Trust for Public Land purchase twelve of the sixteen plots lining that spectacular bluff, blocking development of a housing subdivision.

Nearly thirty years later, with the land on the Cape Horn bluff in Forest Service ownership, a 6.8-mile public trail has been completed. On August 13, we will celebrate the dedication of this overlook in honor of Nancy Russell's vision.

View from Cape Horn.

Photo: James Holloway



Wind Energy Projects Threaten Gorge Resources

Nathan Baker, Staff Attorney, nathan@gorgefriends.org

Michael Lang, Conservation Director, michael@gorgefriends.org

The past five years have brought an explosion of energy development in the Pacific Northwest, fueled by increasing energy needs, particularly in California, along with state mandates to increase reliance on renewable energy to meet these needs.

The most visible evidence of this surge in energy development is in the eastern Columbia River Gorge, where hundreds of wind turbines are visible on the Columbia Hills in Washington and in Sherman County, Oregon. In the span of just a few years' time, this unprecedented scale of

development has transformed wide swaths of landscape from agriculture and open space to industrial development.

Although wind energy is an important resource for reducing dependence on fossil fuels and related environmental impacts, poorly sited wind projects can cause their own serious environmental problems and negative community impacts. In some locations, wind projects have been known to kill birds and bats by the thousands, mar scenic landscapes, and interfere with surrounding land uses.

The Columbia River Gorge National

Scenic Area Act prohibits new industrial uses, including large-scale commercial energy development, on General Management Area and Special Management Area lands. However, high-elevation ridges lining the boundaries of the National Scenic Area are attractive to wind energy developers because of favorable winds and proximity to high voltage transmission lines.

In the past five years, three large wind energy projects have been proposed along the boundaries of the National Scenic Area. Each of these projects



The SDS Whistling Ridge proposal would line the middle ridge seen here from Nestor Peak with a massive turbine development.

Photo: © Chris Carvalho / Lensjoy.com

Developer's simulation of the projected visual impact of the Whistling Ridge Energy Project as seen from I-84 east of Hood River.

Photo: GeoDataScape, Inc.

More than half of the proposed Whistling Ridge turbines would be highly visible from the Gorge, with blades whose turning diameters exceed the length of a Boeing 747 jumbo jet.





A northern spotted owl is known to be nesting near the proposed SDS wind turbine site.

Photo: Courtesy of Cacophony / Creative Commons

Little is known about species diversity at the project site, yet SDS has never surveyed for birds during key migratory periods at the Whistling Ridge site.

threatened scenic landscapes and wildlife. If this trend were to continue, the eastern and central Scenic Area could be bordered with rows of 425-foot-high turbines, like an enormous white picket fence with spinning blades and flashing lights.

In 2006, Cannon Power proposed approximately 200 turbines north and east of the National Scenic Area in Klickitat County to meet energy needs in California. In reviewing the project, Friends became concerned that the westernmost portion of the development, located on the boundary of the National Scenic Area, would impair scenic landscapes and harm bird populations, particularly raptors. Friends appealed the approval of the project and then worked with the developer to lessen the project's adverse impacts.

In 2007, a Massachusetts-based developer proposed the Cascade Wind project, which would have placed forty-two turbines on the boundary of the National Scenic Area west of The Dalles. The project would have been highly visible

from designated "key viewing areas" in the Gorge. Portions of the project were to be located within the Scenic Area, where industrial uses are prohibited. Local opposition and regulatory barriers caused the proponents to abandon the project two years later.

More recently, SDS Lumber Company has proposed the Whistling Ridge Project, which would consist of up to fifty turbines, each 426 feet tall, on forested ridgelines bordering the National Scenic Area. Located west of the White Salmon River, more than half of the proposed turbines would be highly visible from the Gorge, with blades whose turning diameters exceed the length of a Boeing 747 jumbo jet. To address these and other scenic impacts, the U.S. Forest Service, the National Park Service, and the State of Washington's Counsel for the Environment have all recommended substantial modifications to the project. SDS, however, has refused to incorporate these recommendations.

If developed, the 1,152-acre SDS Whistling Ridge Project would permanently convert wildlife habitat into an industrial landscape. It is one of the first Northwest wind projects proposed in forested habitat. Little is known about species diversity at the project site, yet SDS has never surveyed for birds during key migratory periods at the Whistling Ridge site.

Further, the SDS project site is located within a Northern Spotted Owl Special Emphasis Area, a forested area formally designated to ensure the survival of this critically imperiled species. Wildlife biologists have recently determined that there is an active spotted owl nest near the project site.

Ironically, the benefits of the Whistling Ridge Project to the people of the Pacific Northwest – other than financial benefit to SDS's owners and employees – would be slim to none. The total energy capacity for Whistling Ridge is projected to be only seventy-five megawatts or less, a relatively small amount of power that would most likely be distributed to California.

Ultimately, the decision whether to allow the Whistling Ridge Project lies in the hands of Washington Governor Chris Gregoire and BPA Administrator Steve Wright. Friends and our allies will be encouraging these leaders to protect our national heritage and counting on them to uphold the public interest by denying the Whistling Ridge Project. ■

Sandy Wright, Development Director
sandy@gorgefriends.org

Annual Meeting Highlights 25th Anniversary of the National Scenic Area

More than 260 people turned out for Friends' 31st Annual Meeting and Luncheon at Skamania Lodge in April. Board Chair Bob Hansen welcomed new members and saluted staff, volunteers, donors, and everyone who has taken action for Gorge protection, which included virtually everyone in the room.

Bowen Blair, executive director at Friends from 1982 to 1988, related the dramatic and moving story of the battle to enact the Columbia River Gorge National Scenic Area Act in 1986. The Scenic Act was the only stand-alone environmental legislation passed during the Reagan era. All odds were stacked against it, but time and

again, small miracles allowed it to move to forward. Oregon Senator Mark Hatfield, then head of the powerful Senate Appropriations Committee, played a significant role in its passage, as did Friends founder Nancy Russell.

Michael Lang, Friends' conservation director since 1993, followed up with an analysis of the Scenic Act's impact over the past twenty-five years, using aerial photography to show how urban sprawl has been halted, but also how clear-cut logging and cumulative development effects continue to harm the Gorge.

Kevin Gorman, executive director since 1998, announced the new "Gorge Towns to Trails" program, a vision for trails connected

to Gorge communities. Renee Tkach, our previous outdoor program coordinator, is returning to Friends to lead this new program. Stay tuned for more on Gorge Towns to Trails. ■

Thanks to our Annual Meeting sponsor, Ferguson Wellman, and to Chocolat Lily for providing sweets.



FERGUSON WELLMAN
CAPITAL MANAGEMENT

Chocolat Lily
Organic Chocolates



Photo: Justin Carroll

Poet's
shooting
stars.

Photo: Angie Moore

Donor Spotlight: Marion Kelly

In 2005, at Friends' Annual Meeting, Kevin Gorman announced the \$4.5 million Norman Yeon bequest to Friends and the creation of Friends of the Columbia Gorge Land Trust. After the meeting, longtime member Marion Kelley approached Kevin to express her enthusiasm for Friends' excellent work and to notify him that she would be naming Friends in her will. She was thrilled to be making a gift that would create an enduring legacy. Sadly, Marion passed away earlier this year but, true to her word, she made a final bequest to Friends. We will remember Marion as we carry out our work on her behalf.

Special Gifts

January 11, 2011 – April 20, 2011

IN HONOR OF DEBBIE ASAKAWA
BARBARA AND JOHN DEGENHARDT
JOHN GALE AND DR. SANDRA JOOS
MICHAEL AND NANCY PHILLIPS
CHRIS AND JAN SOKOL
CULLEN WARE

IN HONOR OF NATHAN BAKER
JEREMY EMMI

IN HONOR OF CAROLYN BAKER-CLARK
NOLA BORLAND

IN HONOR OF BETH COPELAND
BRUCE AND BECKY COPELAND

IN HONOR OF BOB HANSEN
JIM OLDFIELD

IN HONOR OF MAEGAN JOSSY
APRIL AND BOB JOSSY

IN HONOR OF DEE Kiest
SYLVIA GRISWOLD

IN HONOR OF TOM RUSSELL
NANCY AND STEPHEN RUSSELL

IN HONOR OF TOM AND TAUNA TATTAM
BILL AND SARA TATTAM

IN MEMORY OF DR. ROBERT E. BECKER
WINIFRED MCGUIRE BECKER

Featured Hike: Larch Mountain, OR

Moderate: 6 mile loop, 1,100-ft elev. gain

Maegan Jossy, Outdoor Program Coordinator
maegan@gorgefriends.org

The six-mile loop trail at Larch Mountain crater offers an invigorating hike through pristine old-growth forest, passing a marshy meadow full of shooting stars, marsh marigolds, and other wildflowers in late spring. Join us for a fantastic sunset hike on June 22 as the setting sun casts a rosy glow on the Gorge.

No larch trees grace this peak, but plenty of fine old firs fill the forest. An easy hike option is the quarter-mile stroll from the parking area to Sherrard Point, for views of several splendid mountains.

Trails notes and info are online at www.gorgefriends.org/hikes. ■

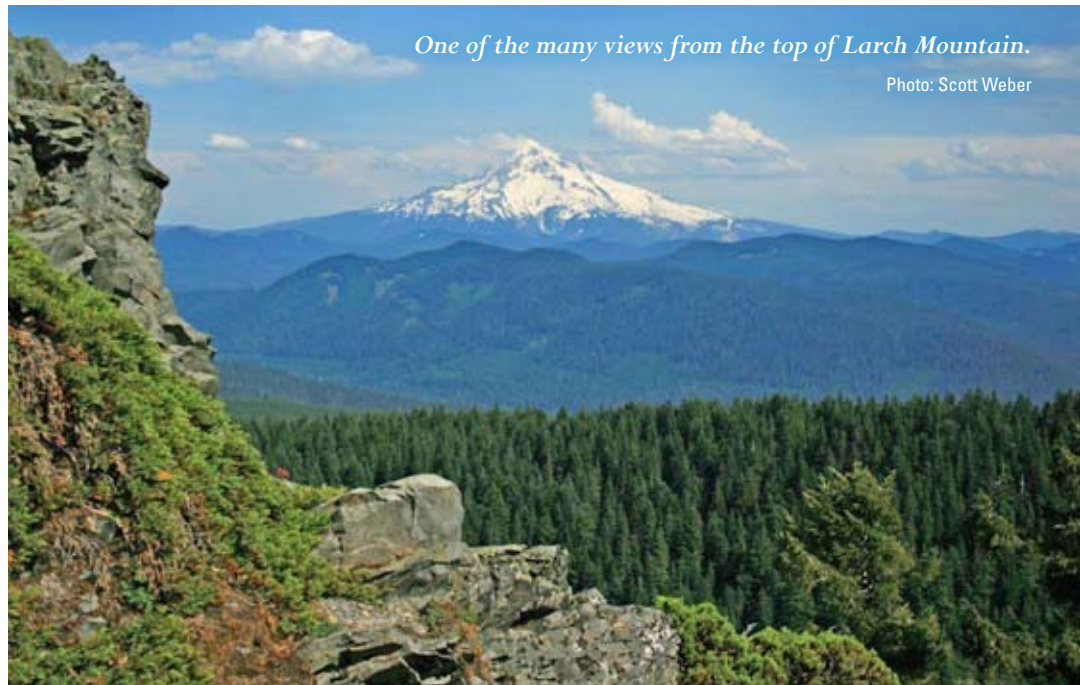
Directions: From I-84 take Exit #22/Corbett and proceed up the hill two miles. Turn left on the Historic Columbia River Highway for two miles. Take the right fork up Larch Mountain Road and continue fourteen miles to the trailhead at the turnaround.

Note: Larch Mtn. Road is closed November through mid-May, depending on weather, and is gated halfway down the mountain.

25 Trails, 25 Years: Hike the Top 25 Gorge Trails

Join Friends in celebrating the National Scenic Area's 25th anniversary! It's a challenge to hike the Top 25 Trails in the Gorge this year before October 31.

Join a Friends-guided hike or hit the trails on your own. Friends members who complete all 25 trails will be entered in a drawing for our grand prize: two nights, plus Sunday brunch or dinner buffet, for two at Skamania Lodge! All Friends members who hike even one trail will receive a 25th anniversary stainless steel water bottle.



One of the many views from the top of Larch Mountain.

Photo: Scott Weber

IN MEMORY OF MARY CARSON BRODIE
HELEN DALTON
NICHOLAS AND KATHRYN DODGE

IN MEMORY OF MARY AND LAIRD BRODIE
CARLTON OLSON

IN MEMORY OF BRUCE CANNADY
BATEMAN FUNERAL HOME
JOSEPH AND JODY BROWN
GLENDA AND GALEN BUTERBAUGH
MARK AND SHANNA FORTNER
BRUCE AND DOROTHY HEDMAN
CATHERINE SKELTON
MARGARET VENATOR

IN MEMORY OF NED HAYES
DIANA BAIRD

IN MEMORY OF JOHN IRWIN
JANICE DUTTON

IN MEMORY OF BARBARA M. MILLER
JAMES MILLER

IN MEMORY OF CATHY OSWALD
ANDREA ARDLEY

IN MEMORY OF JEANNE MCGILL NORTON
MARIE V. HALL
MARNA AND CLIFF MOORE
ROBERT AND KAY PENDLETON
GARY AND DEBORAH RHOADES
PARVIZ AND MAUDIE SAMIEE
LEE AND JANET TORNUST

IN MEMORY OF HAZEL SEAVEY
MICHAEL KEPLER
WENDY AND ROBERT NEWBY

IN MEMORY OF LENNART SWENSEN
KRISTINA HOLVIK

IN MEMORY OF SUSAN WAGOR
ANNE EMMETT

IN MEMORY OF MATT WINTHROP
TIMOTHY BROWN AND SHARLENE
CARLSON BROWN
CASSANDRA RUTH CLINE
CANDICE AND CHARLIE TUCKER
JEANNIE AND ARTHUR WALDMAN
HANS AND KATHLEEN WEST

Save the Date!

Friends Annual Picnic
July 31, Noon – 3:30 p.m.

More details coming soon.



Non Profit
U.S. Postage
PAID
Ridgefield, WA
Permit No. 94

Friends of the Columbia Gorge

P.O. Box 40820

Portland, Oregon 97240-0820

Know Your Gorge: *Then and Now*

The Columbia River Gorge National Scenic Area was established by Congress in 1986, and celebrates its 25th anniversary this year. To commemorate the occasion, our quarterly newsletters are providing windows to the past, from the 1860s up to the present.

The aerial images seen below highlight changes over the past sixteen years at the western boundary of the Columbia River Gorge National Scenic Area in Clark County, Washington.

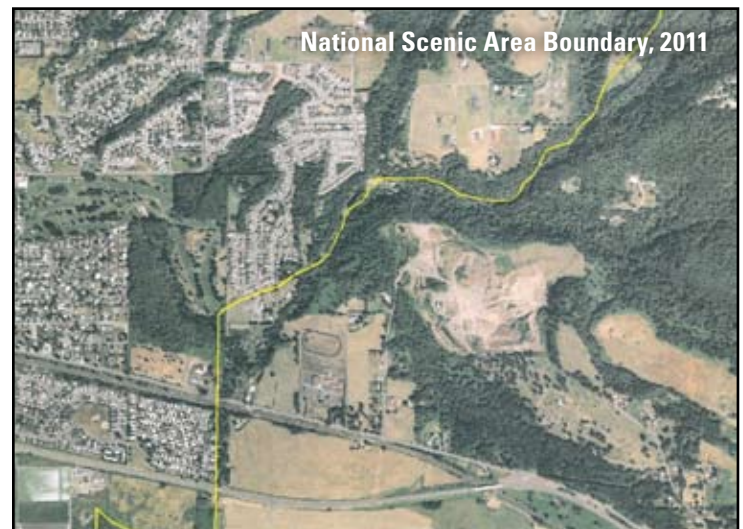
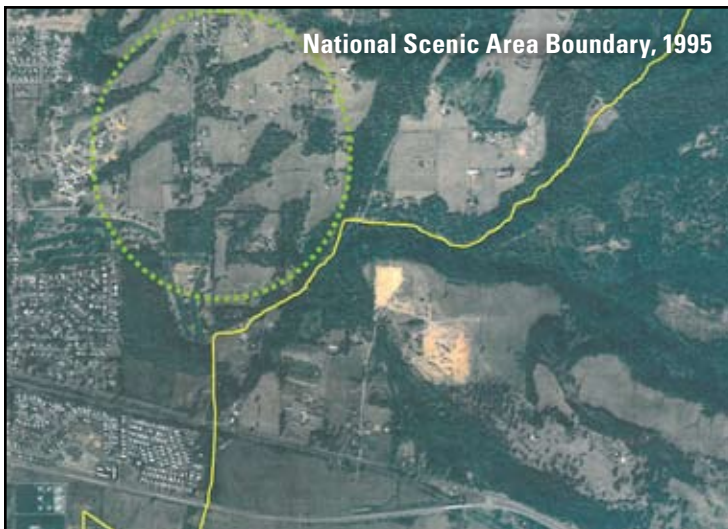
On the Oregon side of the river, dramatic differences between the urban and rural landscapes at the Scenic Area boundary at the Sandy River have been unmistakable for years. Across the Columbia in Washington, the delineation has been less distinct. Yet very gradually, over the past decade and a half, a similar striking demarcation has developed there, near Washougal.

In the 1995 photo, Clark County's farmlands are prevalent on both sides of the National Scenic Area boundary. But by 2011, it is

apparent that much of the farmland and open space outside the boundary to the west has been overtaken by subdivisions, pushing right to the edge of the protected National Scenic Area.

Friends of the Columbia Gorge was created in part as a response to the construction of the I-205 bridge. With completion of the bridge in 1982, it was obvious that, left unchecked, suburban sprawl would rapidly overrun the small communities of Troutdale, Oregon, and Camas and Washougal, Washington. Unrestricted development would push relentlessly eastward into the Gorge.

The Columbia River Gorge National Scenic Area Act could not prevent the explosive growth of development that has paved over open spaces west of the Scenic Area boundary on both sides of the river. But the Scenic Act has clearly held the line and protected the incomparable beauty of the landscapes within the Columbia River Gorge. ■



Increasing development in Clark County presses up to the Scenic Area boundary. The circled area (left, 1995) highlights undeveloped farm and forest lands. By 2011 (right), nearly all of that land has been overtaken by suburban development. Maps: Friends of the Columbia Gorge Archives