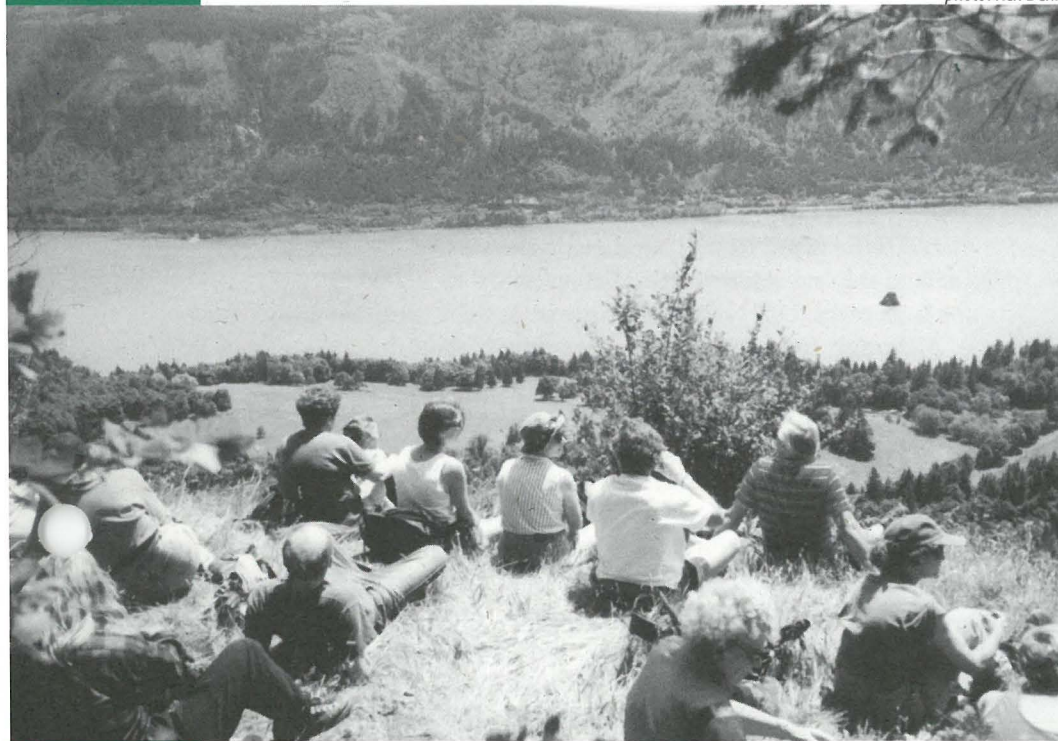


FRIENDS OF THE COLUMBIA GORGE

Spring 2001 Newsletter

photo: Ken Denis



line, and has the funds to make offers on about half of these priorities. To top it off, the Forest Service's land acquisition program currently has the staffing to make offers on only about 15 land parcels a year.

Depending on your outlook on life, this is a tremendous opportunity or tremendous threat. Let's look at the opportunity first. Public land acquisition is the best chance we have for permanent protection of the Gorge. Because of recent public land acquisition, places like Memaloose Hills, Catherine Creek and the restored portion of the Historic Columbia River Highway between Hood River and Mosier are available for public enjoyment.

The federal legislation creating this surge of land offers was several years in the making. For years, the Forest Service's land acquisition program languished as it had difficulty spending the millions it had. Last fall, Congress stepped in to end this dilemma, but it in turn created this volatile situation. Congress gave Gorge landowners in the Special Management Area the ability to offer their land to the Forest Service for purchase and directed the Forest Service to appraise those lands as if the National Scenic Area Act did not exist. *(continued on page 7)*

187 Land Offers Spell Gorge Protection or Destruction

The flood of offers swamps Forest Service staff

by Kevin Gorman

The numbers are daunting no matter how you look at it: due to a recent change to the National Scenic Area Act, the Forest Service's National Scenic Area land acquisition program has received 187 land offers from willing sellers over the past eight months, totaling more than 6,700 acres.

The Forest Service has three years to make offers to buy these lands or the lands will convert to a zoning that will allow more development and increased logging and mining in the Gorge. Aside from the 187 offers, the Forest Service also has about 40 parcels rated as top priorities for acquisition already in the pipe-

Above: Hikers enjoy the view from one of the 187 land offers to the Forest Service. This spot would be a viewpoint off the proposed Cape Horn Loop Trail.

INSIDE
Special Hiking Insert

saving sensitive lands

Executive Director's Letter

One of my former bosses loved to tell me that the Chinese ideogram for crisis is a combination of the ideograms for opportunity and threat. If that is the case, we are indeed in crisis mode in the Gorge.

Our cover story on the Gorge land acquisition program details the Fall 2000 legislative amendment to the National Scenic Area Act, an unprecedented action in the 15-year history of the Act. As the result of the amendment, never before and never again will the Forest Service be looking at this many land offers at one time for public acquisition. Never before and never again could so many properties convert to a zoning that would allow such a significant increase in development.

The opportunities and threats don't stop with land acquisition. The Gorge economy, as well as the nation's, is sliding, and proposals are popping up for increasing the number of power plants in the Columbia Basin. This could significantly affect the air quality of the Gorge. The Bureau of Indian Affairs also plans to send out requests for proposals to mining interests for mining on up to 10,000 acres of land owned by Native Americans in the Columbia Gorge. Although some of the lands lie in the National Scenic Area, land owned by Native Americans is exempt from Scenic Area development rules.

These are two examples of activities in the name of economic development that could greatly impact the beauty of the Gorge. But within the threats that come with economic slowdowns is also the light of opportunity. Our Field Organizer Tiffany Newton lays this opportunity out in her story on page five. The result of this opportunity could be an unusual alliance of individuals working toward significant sustainable and environmentally friendly economic development projects.

For anyone who cares about our environment, 2001 has indeed seemed like a crisis as so many environmental protections and program are being challenged. My call to you is to adopt the Chinese mindset for crisis, by working

diligently to overcome challenges and thinking creatively to open the opportunities. Our future generations demand nothing less.

Sincerely,



Kevin Gorman
Executive Director

photo: Ken Denis

Mission Statement

Friends of the Columbia Gorge shall vigorously protect the scenic, natural, cultural and recreational resources within the Columbia River Gorge National Scenic Area.

We fulfill this mission by ensuring strict implementation of the National Scenic Area Act; promoting responsible stewardship of Gorge lands and waters; encouraging public ownership of sensitive areas; educating the public about the unique natural values of the Columbia River Gorge and the importance of preserving those values; and working with groups and individuals to accomplish mutual preservation goals.

—Adopted November 20, 1997



Citizen Involvement Update

Friends Outreach & Volunteer Happenings

by Betsy Toll, Volunteer Coordinator

Hike Shepherds Needed!

If you like to hike, being a Shepherd is the easiest volunteer assignment there is. Hike Shepherds are a vital part of our hiking programs, and our Shepherd training in April was a big success. Gorge Hiking Weekend June 16-17 still has Shepherd positions to fill so now is the time to sign up as a Shepherd. Contact Deirdre at deirdre@gorgefriends.org or 503-241-3762 x106 to get started. ■

Summer and Fall Events

Two new outdoor activities are scheduled for this summer, so mark your calendar:

- **Saturday, August 4**, a Day at the Shire (Members only, see page six for details).
- **Saturday, August 25**, a water-fall hike for the whole family at Horsetail Falls.

Check the "Get Active" section of our website for more information at www.gorgefriends.org. ■

Friends' Stewardship Projects

This spring, Friends' volunteers picked up litter along the Scenic Highway near Bridal Veil Falls, turned out to pull knapweed and chicory at the Dalles Mountain Ranch State Park, and showed up again to clear invasive blackberry and English ivy at Bridal Veil Falls. Check our website for upcoming stewardship dates on the Get Active page. Or contact Betsy at 503.241.3762 x 107 or email to betsy@gorgefriends.org to volunteer. ■

It's Hiking Season

Our Spring Wildflower Hikes series is in full bloom. Check our website www.gorgefriends.org/getactive for the full schedule, or call 503.241.3762 x400 for information on each week's hike.

Our 21st annual Gorge Hiking Weekend is all set for June 16-17. Check the brochure insert in this newsletter! ■

Hats Off to Friends' Volunteers

Our volunteers are terrific, and we couldn't get by without them. Our hike leaders and Shepherds are the heart of our hiking programs, and every one of them is a volunteer. And the following folks generously donate their time and skills in support of our programs throughout the year:

Legal Program Volunteers:

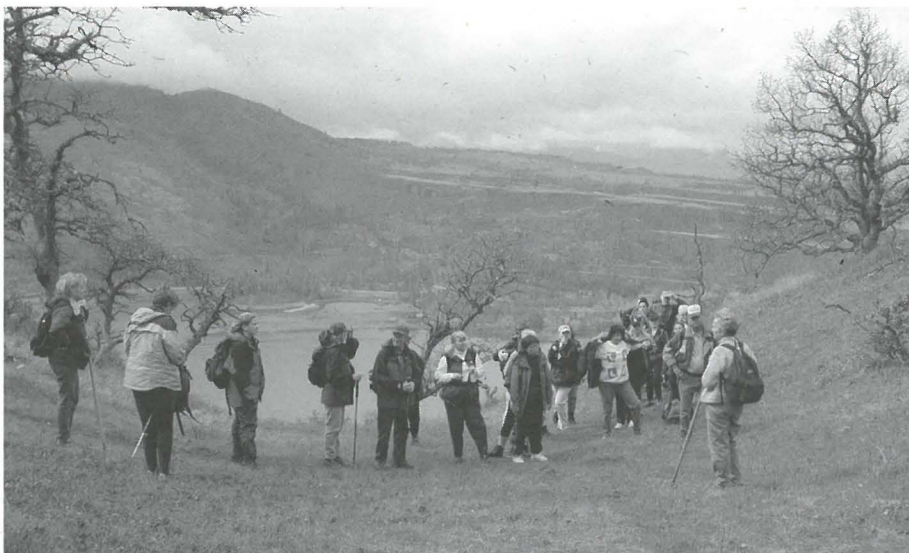
Jill Desrochers
Philip Kline
Aaron Matusick
Laurie Meyer
Jeremy Weber

Office Support Volunteers:

Bo Holloway
Helena Silberstein
Nicole Warren
Diana Karabut
Pat Sims
Maxine Wilkins

Our thanks to all of you! ■

130



Nancy Russell leads spring hikers on her Cherry Orchard Trail just east of Lyle, WA.

photo: Kevin Gorman

Friends Wish List

We need the following items to keep ahead of the challenges of Gorge protection. Please let us know if you can help:

- One Windows computer, 333Mhz or better, internet ready, for the Hood River office
- One computer desk and chair (in decent shape), also for our field office
- One Macintosh computer, internet ready, for the Portland office ■

66



Conservation and Legal Program Highlights

In the courts and in the field...

Michael Lang, Conservation Director, michael@gorgefriends.org and Nathan Baker, Staff Attorney, nathan@gorgefriends.org

Legislature Ponders Responses to Measure 7

In response to Measure 7, the "takings" initiative approved by voters last November, the Oregon Legislature has formed the Land Use and Regulatory Fairness Committee as a forum to discuss regulatory fairness.

On February 22, a state court ruled that Measure 7, the "takings" initiative passed by voters last November, contains fundamental flaws that violate the Oregon Constitution.

Friends and 19 other conservation groups have formed the Oregon Community Protection Coalition (OCPC) to respond to Measure 7. The OCPC believes that Oregonians can protect our environment and quality of life while at the same time ensuring fairness. Visit the OCPC website at www.protectoregon.org ■

Gorge Rules Up for Review and Revision

The Gorge Commission needs to hear from you!

Protection of the Columbia Gorge may come under fire as review of the Gorge Management Plan gets underway. This first-ever review will affect management of the Gorge for decades to come and open numerous opportunities to weaken or strengthen the Plan.

It's critical for supporters of the Scenic Area to voice their support for strong protections. Let the Gorge Commission know that you support strengthening the Management Plan to ensure long-term protection of our national treasure.

Below are important points to mention:

- ✓ Close loopholes and improve enforcement of guidelines that protect scenic landscapes in the Gorge.
- ✓ Strengthen rules protecting farmland, forestland and open spaces from residential sprawl.
- ✓ Update protection for rare plants, wildlife habitat, and cultural resources.
- ✓ Prohibit new mines and the expansion of existing mines in the Scenic Area.

Address comments to: Columbia River Gorge Commission, P.O. Box 730, White Salmon, WA 98672
Email: crgc@gorge.net. Check our web site for more information! ■

Friends Settles Urban Area Lawsuit

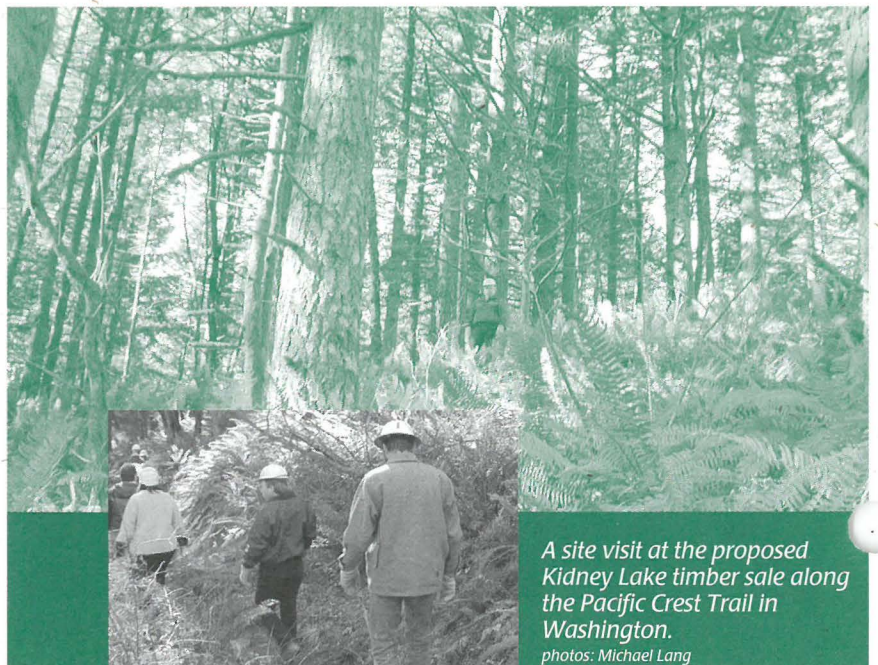
Friends reached an agreement with the City of Cascade Locks,

Hood River County and the Gorge Commission regarding the revision of the Cascade Locks Urban Boundary. The out-of-court settlement resulted in more developable land within the Urban Area and a net gain in land area within the Scenic Area. The settlement could not have occurred without the dedication of all parties to finding a mutually agreeable solution. ■

More Logging Along the Pacific Crest Trail

The Washington Department of Natural Resources (DNR) plans to log another 124 acres of state-owned forest land within the Columbia River Gorge National Scenic Area along the Pacific Crest National Scenic Trail (PCT), one of the premier hiking trails in North America.

The Kidney Lake Timber Sale, named because of its proximity to
(continued from page 5)



A site visit at the proposed Kidney Lake timber sale along the Pacific Crest Trail in Washington.

photos: Michael Lang

Sustainable Economic Development

A dialogue begins with Gorge economic interests

by Tiffany Newton, Field Organizer

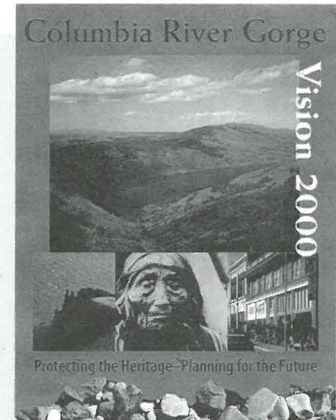
Communities in the Columbia Gorge, like others across the Pacific Northwest, are reeling from manufacturing cutbacks, particularly in lumber mills and aluminum plants. The loss of aluminum plant jobs in the Gorge hits especially hard, as the average worker salary is \$62,000 annually compared to \$24,000 for non-plant workers.

In addition to protecting natural, cultural, scenic and recreational resources in the Columbia River Gorge, a stated purpose of the National Scenic Area Act is to protect and support the economy of the Gorge area. Friends has spent much of the last year discussing sustainable economic development concepts with Gorge economic development interests. Numerous conversations with Gorge economic development interests and experts on sustainable development have reinforced our commitment to working with Gorge communities to promote economic development

solutions that support the goals of the National Scenic Area Act.

Friends has developed an informal partnership with The Center for Watershed and Community Health (CWCH). In 1997, CWCH conducted a comprehensive study in two Gorge counties of creating new and expanded waste-based businesses in reuse, recycling and bioproducts that could promote local and regional closed-loop economic development. The Columbia Gorge is ideally suited to this project as it is a major transportation corridor (barge, rail, interstate highway) and hosts two major landfills just east of the National Scenic Area. The CWCH study produced a very practical, useable business plan for would-be entrepreneurs, but has languished due to lack of promotion and outreach to key economic development interests.

Friends is working to support efforts to update and expand the study, conduct appropriate outreach



Columbia River Gorge Vision 2000 is a coalition of concerned individuals, organizations and businesses, from both within and outside of the Gorge, who came together to take action on behalf of one of our greatest natural treasures – the Columbia River Gorge.

to promote it, and set up a framework in which the recommendations in the study could be used on a long-term basis. View the current study at: www.upa.pdx.edu/CWCH/ReportsFolder/hoodriv.htm ■



More Logging Along the Pacific Crest Trail

(continued from page 4)

beautiful Kidney Lake, will be approximately 1.5 miles from the PCT trailhead on Highway 14 near Bonneville. This section of the trail is used year round by families and other hikers because of its easy grade and accessibility.

The DNR has allowed relentless logging of this section of the PCT over the past decade, including large clearcuts in 1991 and again in 1997. Now, the DNR proposes to log another 1.3 million board feet of

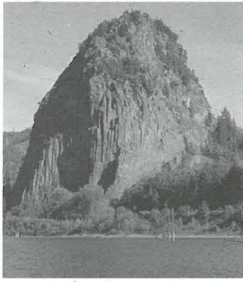
timber. This will include removal of timber right up to the PCT on both sides, as well as temporary closures of the trail where the logging will take place.

Friends and seven other conservation and hiking groups have appealed the Kidney Lake sale. Friends is also currently reviewing a 15-acre clearcut proposed on private land, immediately south of the Kidney Lake sale.

What You Can Do

Check the "What We Do" page on our website (www.gorgefriends.org) for information. ■

This area, immediately adjacent to the Kidney Lake sale area, was clearcut in 1991.



Funding Gorge Protection Development Director's Report

by Jane Haley

A Gathering of Friends

More than 150 Friends' members and staff gathered for our annual meeting on March 11th at the beautiful Columbia Gorge Hotel in Hood River. Our luncheon

meeting focus was the Columbia River Pastoral Letter Project, which produced a restoration vision for the Columbia Basin from faith-based perspectives.

Keynote speaker Mrs. Yvonne Smith, a Yakama Nation member who served on the Pastoral Letter project steering committee, explained the project. Pacific Northwest Catholic bishops



convened dozens of community meetings throughout the entire region. The concerns, hopes, and vision expressed in these meetings were distilled in the Pastoral Letter, a clear and moving call to action to protect and restore the Columbia River.

Left: Annual Meeting Keynote Speaker Mrs. Yvonne Smith. Above: Members gather in the Columbia Gorge Hotel at the 21st annual meeting. photos: Ken Denis

Members Only

Friends' springtime outdoor programs are extending into summer and fall, adding members-only events as well.

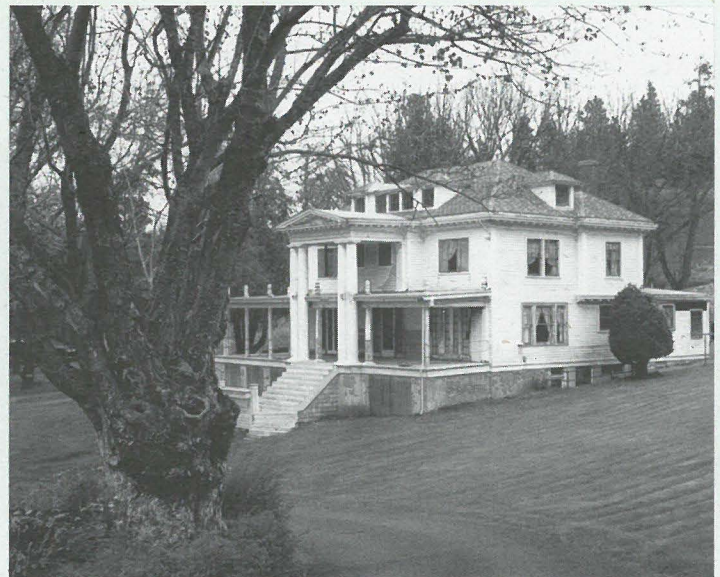
"A Day at the Shire" promises a wonderful Friends afternoon at the John Yeon estate along the river in Washington. Join us on Saturday, August 4, to explore the riverside grounds of this beautiful historic estate, picnic with your family and enjoy an afternoon of fun by the river with Friends. Call early to register. This not-to-be-missed afternoon is limited to a group of 30 current members and their families only.

Members-only events will sometimes take us to areas off the usual maps, or that require special permission. Outings will be announced in our newsletters and at www.gorgefriends.org/getActive. ■

Summer Picnic Plans

This year's Summer Picnic is scheduled for Sunday, July 22nd. The potluck event will be held at the beautiful Mayer Mansion, a recently renovated historic estate two miles east of Mosier amid cherry orchards overlooking the Columbia River.

Members and their guests are invited to enjoy games, live music and a potluck feast, tour the Mayer home, or enjoy a hike with Nancy Russell in the surrounding Memaloose Hills. Mark July 22nd on your calendars for a wonderful summer day with Friends. ■



The Mayer estate will be the site of this year's Summer Picnic.

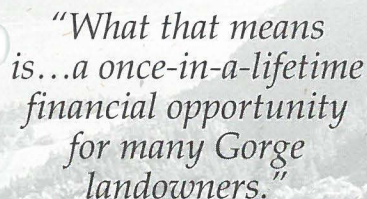
187 Land Offers Spell Gorge...

(continued from page 1)

What that means is that a 40-acre parcel in Klickitat County that currently allows only one residence might be appraised as if it could be divided for up to eight residences, a once-in-a-lifetime financial opportunity for many Gorge landowners. If the Forest Service isn't interested in the land, or doesn't have enough money or staffing to purchase the land, the zoning converts to General Management Area, which allows more development in the Gorge.

Some of the lands currently being offered to the Forest Service include:

- An actual Lewis & Clark campsite along Major Creek, just east of Hood River on the Washington side;



"What that means is...a once-in-a-lifetime financial opportunity for many Gorge landowners."

- Portions of Rowena Dell, the picturesque canyon just below the Tom McCall Preserve; and,

- Several pastoral parcels across from the Vista House on the Washington side of the Gorge.

Friends is working diligently to ensure that the opportunity trumps the threat. We are working with Congressional staffers to lobby for funding and Forest Service staffing to face the onslaught of land offers that are coming in. And we're prioritizing the 187 land offers ourselves and offering our perspective to the Forest Service as they wade through the offers.

Ensuring Forest Service staffing to handle this heavy load is the top priority. Friends is encouraging Senator Gordon Smith to play a

lead role in working with the Bush Administration and the Forest Service to support the Gorge land acquisition program.

What you can do:

Contact your Senators and ask them to help fully fund the National Scenic Area land-acquisition program through increased staffing and funds for land acquisition. Ask Senator Smith to encourage the Bush Administration to support Gorge land acquisition.

Contact information:

Senator Gordon Smith
121 SW Salmon St., Ste. 1250
Portland, OR 97204
Phone: 503-326-3386
Fax: 503-326-2900
www.senate.gov/~gsmith/webform.htm

Senator Ron Wyden
700 NE Multnomah, #450
Portland, OR 97232
Phone: 503-326-7525
Fax: 503-326-7528
www.senate.gov/wyden/mail.htm

Senator Patty Murray
500 W 12th St.
Vancouver, WA 98660
Phone: 360-696-7797
Fax: 360-696-7798
senator_murray@murray.senate.gov

Senator Maria Cantwell
717 Hart Senate Office Building
Washington, DC 20510
Phone: 202-224-3441
Fax: 202-228-0514
<http://cantwell.senate.gov/mailform.html>

To see the entire list of parcels offered in the Gorge through this legislation, go to our website (www.gorgefriends.org) for the link to the U.S. Forest Service's National Scenic Area office. ■

Friends of the Columbia Gorge

www.gorgefriends.org

Portland Office
522 SW Fifth Avenue, #820
Portland, Oregon 97204
(503) 241-3762

Gorge Office
416 Oak Street
Hood River, OR 97031
(541) 386-5268

Board of Directors

Kim Gilmer, *Chair*
John Reynolds, *Vice Chair*
Nancy N. Russell, *Chair Emerita*
Rick Ray*, *Treasurer*
Ken Denis, *Secretary*
Ann Wheelock, *At-large*
Lester Baskin
Chris Beck
William Bell*
Broughton H. Bishop
Bowen Blair, Jr.
North Cheatham*
Spencer Dick
Karen Johnson
Elmer Lierman* (on leave)
Guy Moser*
Jeanne Norton
Missy Ryan*
Dick Springer
Len Swenson*

Staff

Nathan Baker, *Staff Attorney*
Jill Descrochers, *Legal Assistant*
Michele Fuchs, *Development Assistant*
Kevin Gorman, *Executive Director*
Jane Haley, *Development Director*
Michael Lang, *Conservation Director*
Deirdre Murray, *AmeriCorps Member*
Tiffany Newton*, *Field Organizer*
Kymberlee Snow, *Systems Administrator*
Betsy Toll, *Volunteer Coordinator*
* Gorge residents

Additional Support

Legal Counsel: Gary Kahn
Newsletter Design: Kathleen Krushas

Member:



Environmental
Federation
of Oregon

Thank You for your special contributions

IN MEMORY OF LARRY SHERWOOD
JOAN SHERWOOD

IN MEMORY OF STAN HAYTON
LINDA M AND JAMES BROWNING

IN MEMORY OF MOE JUBITZ
NANCY AND BRUCE RUSSELL 26

IN MEMORY OF KENNETH SCHRAMM
NANCY SCHRAMM

IN MEMORY OF ERNEST LIVINSTONE
NANCY AND BRUCE RUSSELL 40

IN MEMORY OF ELEANOR PIERCE
ELIZABETH PARKER

IN MEMORY OF EDITH SPADY*
NANCY AND BRUCE RUSSELL

IN MEMORY OF CAROLYN TEMPLETON 85
NANCY AND BRUCE RUSSELL 65

HONOR OF JIM AND SYLVIA SPENCE
MARIA MCGEE 73 + 95

* additional memorial gifts to be acknowledged in
summer newsletter.

Friends of the Columbia Gorge

P.O. Box 40820
Portland, Oregon 97240-0820

Return service requested

Non Profit
U.S. Postage
PAID
Portland, OR
Permit No. 2623

*"between the extremities of the wings
it measures 9 feet 2 inches"*

*of the Columbian which they had wounded and taken
alive. I believe this to be the largest bird of North America.
it was not in good order and yet it weighed 25 lbs.
had it have been so it might very well have weighed 10 lbs
near or 35 lbs. between the extremities of the wings it mea-
sured 9 feet 2 inches; from the extremity of the beak to that
of the ear 37.9 lins. from hip to toe 2 feet, girth of head 9 3/4 lins.*



Immediate left:
Captain Clark's
journal description
and drawing of their
first viewing of the
California condor
near the Wind River.

Upper left: This descrip-
tion details the wingspan of
captured condor: 9 feet, 2
inches.

Know Your Gorge Condors Gracing the Gorge

Native American villages and thundering rapids aren't the only things that have disappeared from the Gorge since Lewis & Clark visited nearly 200 years ago. Much of the wildlife they encountered is also gone. The Lewis & Clark journals speak of wolves, mountain goats, even seals as far upstream as The Dalles. And catching the winds windsurfers so dearly love was North America's largest bird- the California condor.

With a wingspan over nine feet, condors were first seen by the Corps of Discovery near the mouth of the Wind River. Captain Clark wrote in his unique grammatical style, "We here saw several of the large buzzards, which are of the size of the largest eagle, with the under part of their wings white..." Clark later discovered they were not buzzards at all.

With the support of the U.S. Fish & Wildlife Service, the condor has now been introduced to the Grand Canyon and Big Sur in California. Perhaps the Lewis & Clark celebration can spur a reintroduction of this tremendous bird back to its original nesting ground. ■

NG

)

&
2001

y-eight local
volunteering
tise to guide
orge. Choose
arty-six trips.



orge Hiking
atural beauty
River Gorge,
is attraction.

ORGE
Oregon 97204
241-3873



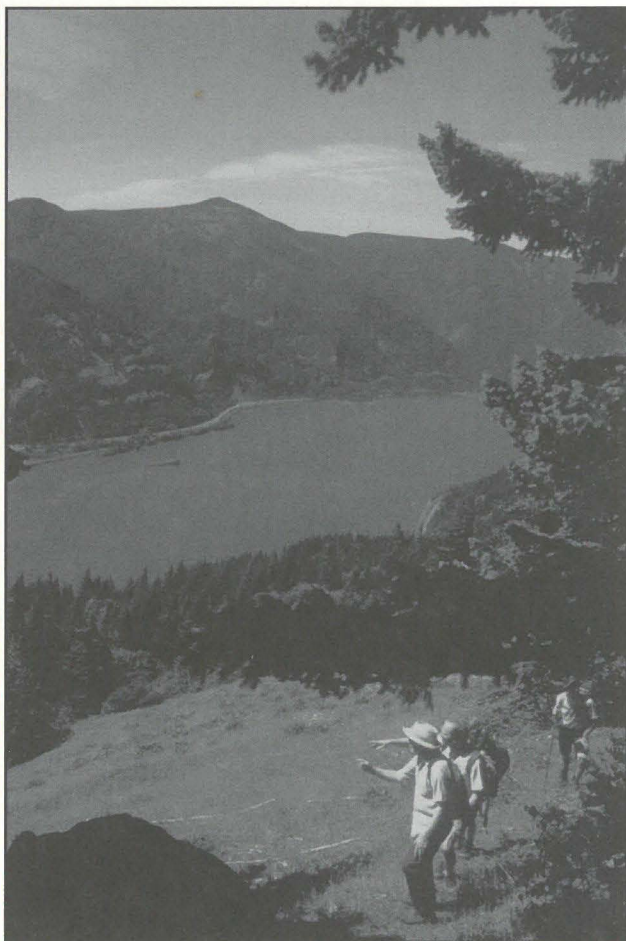
FRIENDS of the COLUMBIA GORGE

21st Annual Columbia River



GORGE HIKING WEEKEND

June 16 & 17, 2001



Hikers on Cook Hill, Ken Denis photo

WHAT TO BRING:

Lunch, water, first aid kit, insect repellent, sun block, sun hat, rain gear, and camera. No animals, radios, alcohol, or firearms.

WHAT TO WEAR:

Long sleeves and long pants recommended. Sturdy hiking shoes that are lug-soled and waterproof. No sandals.

GENERAL:

Prior sign-up is not required except as noted. Children are allowed at leader's discretion but must be accompanied by a responsible adult. Participants accept responsibility for their own safety. Because some flora and fauna may bite back on a few of the trails, stay on paths to reduce possibility of contact with poison oak and ticks. All mileage noted is round-trip. All Exit numbers refer to I-84 eastbound unless otherwise noted.

QUESTIONS:

For details on individual events, contact the leader. For general information, call Friends of the Columbia Gorge (503) 241-3762.

CARPOOLING:

Donation to driver of 5¢ a mile per passenger is recommended. Bridge tolls (75¢ each way) and trailhead parking fees are shared.

* **Gateway.** Southeast corner of Gateway Park & Ride (Portland) near the corner of N.E. 99th Avenue and Pacific St. Access from I-84 Exit 7 (Halsey Street) or I-205 Exit 21A (Glisan Street).

* **Bridge of the Gods Wayside.** Large wayside parking area 0.1 mile east from the Washington end of the (Exit 44, Cascade Locks; turn right and circle up to bridge).

* **Washougal.** WA Hwy 14 east to Washougal; turn left at 15th Street traffic light, then right after one block. Continue to parking lot for Pendleton Woolen Mills.

* **Parkrose.** Parkrose Park & Ride at NE 97th Avenue and Sandy Blvd. in Portland. Access from I-205 Exit 23A.

Special thanks to:

Greg Clarke, Graphic Designer
Irish Setter, Typographer
Brown Printing

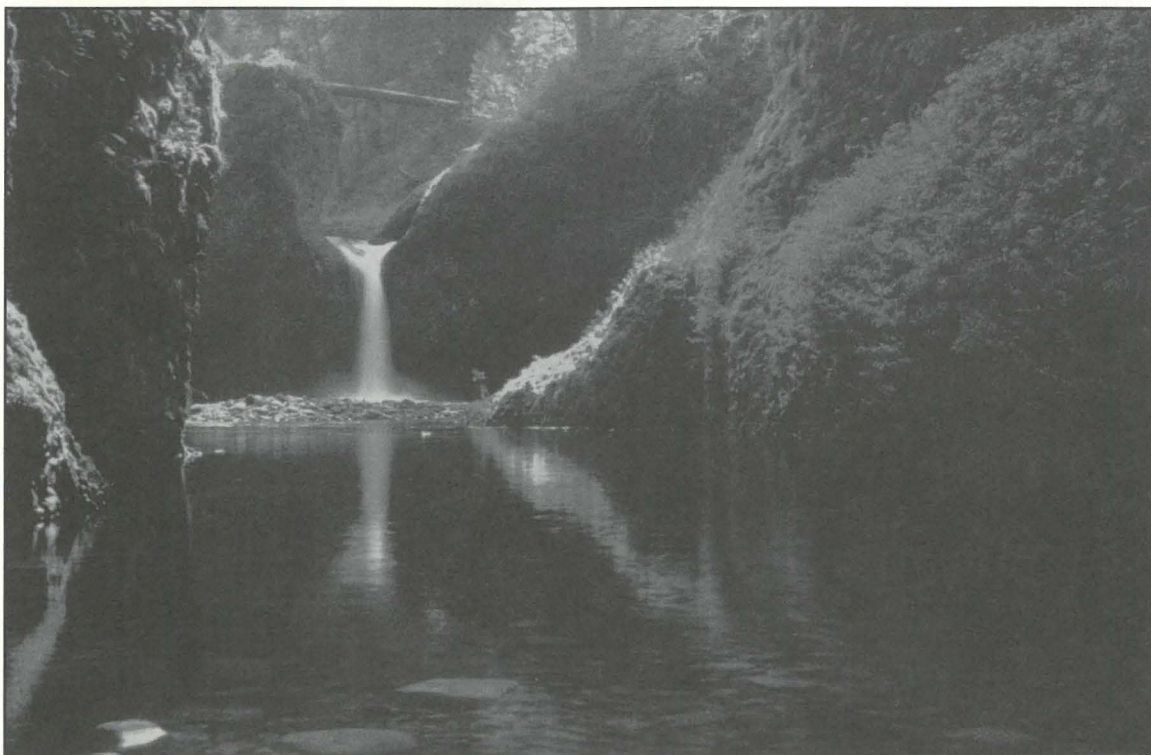
FRIENDS of the COLUMBIA GORGE

21st ANNUAL GORGE HIKING WEEKEND

Saturday, June 16, and Sunday, June 17

"In every walk with nature one receives far more than he seeks."

John Muir



Punchbowl Falls, Ken Denis photo

Most of the activities listed in this brochure are offered without charge. The leaders of these activities are volunteers from these local organizations:

Audubon Society of Portland
Backcountry Horsemen of
Washington—Mt. Adams
Chapter
Bergfreunde Ski Club
Cascade Prime Timers
Chinook Trail Association
Columbia Land Trust
Desert Trails Association
Friends of the Columbia Gorge
Friends of Multnomah Falls
Friends of Tryon Creek State
Park, Daytrippers

Historic Columbia River
Highway Advisory Committee
Hotliners
Jackson Bottom Wetlands
Preserve
Lake Oswego Parks and
Recreation
Mazamas
Multnomah Athletic Club
Native Plant Society of Oregon
The Nature Conservancy
Nature Friends Northwest
Northwest Discoveries

Oregon Equestrian Trails
Oregon Natural Resources
Council
Portland Wheelmen Touring
Club
Ptarmigans
Sierra Club—Columbia Group
St. Helens Hiking Club
Trails Club of Oregon
Washington State Parks
Washington Trails Association
U.S. Fish & Wildlife

CONGRATULATIONS TO FRIENDS OF MULTNOMAH FALLS ON THE 75TH ANNIVERSARY
OF THE MULTNOMAH FALLS LODGE! STOP BY THEIR OPEN AIR FAIR, JUNE 16 & 17

SATURDAY, June 16

EASY HIKES

Up to five miles, less than 1,000 feet elevation gain.

Horseshief Lake Rock Art Trail. A one-mile walk along the Columbia River to tour the many pictographs and petroglyphs, including the famous *She Who Watches*. Limited to 30 people, \$3 donation requested. Call by June 9 for reservations.

WASHINGTON STATE PARKS: Julie Davis (509) 767-1159. Meet 10:00 AM at Horseshief Lake State Park parking lot near boat launch area at the river.

Triple Falls. Walk past basalt cliffs, scenic overlooks, three beautiful waterfalls, and unique Oneonta Gorge. Lunch at the top of one of the few year-round natural triplet cascades in the Northwest. Distance 4.75 miles, elevation gain 950 feet.

MAZAMAS: Billie Goodwin (503) 254-6121. Meet 9:00 AM at Gateway* or 9:45 AM at Horsetail Falls parking lot (Exit 35, then west 1.4 miles on Scenic Hwy).

Pool of the Winds. Gentle climb through the forest, passing basalt cliffs, scenic overlooks and beautiful waterfalls. Distance 3 miles, elevation gain 850 feet.

NATURE FRIENDS NORTHWEST: Thomas Friedmann (360) 254-9104. Meet 10:30 AM at Beacon Rock State Park picnic area (0.5 mile north of WA Hwy 14).

Gillette Lake. Enjoy a hike on the Pacific Crest Trail to a serene lake with a grassy bank. Distance 5 miles, elevation gain 300 feet.

DESERT TRAILS ASSOCIATION: Darlene Nelson (503) 644-8033. Meet 8:30 AM at Lewis & Clark State Park (Exit 18) or 9:15 at Bridge of the Gods Wayside.*

Steigerwald Lake. Join the Fish and Wildlife Service on this easy hike along the Columbia River Dike and past some wetlands in the eastern part of the refuge. Do some birding along the way and learn how the refuge is managed. Distance 5 miles, no elevation gain.

US FISH & WILDLIFE: Jim Clapp (360) 887-4106. Meet 9:00 AM at Cottonwood Beach parking area in Washougal. (From near milepost 17 on Hwy 14 at the east end of Washougal, turn on 32nd Street at the sign for Port Industrial Park. Go 0.4 mile to Index Street and park at the base of the dike.)

Latourell Falls. Forest loop with two beautiful falls, several footbridges and a spectacular cedar grove. Return to parking area for a picnic. Distance 2.3 miles, elevation gain 600 feet.

FRIENDS OF THE COLUMBIA GORGE: Bob Miller (503) 240-3394. Meet 10:00 AM at Parkrose* or 10:30 AM at Latourell Falls parking area (Bridal Veil Exit 28, follow exit road uphill to Scenic Hwy and head west for 2.9 miles.

MODERATE HIKES

Up to 10 miles, less than 2,500 feet elevation gain.

Phlox Ridge. Follow an old road, closed to vehicles for the first 1.5 miles, and then a primitive foot trail to the top of the ridge with a 360-degree view. Distance 4 miles, elevation gain 1,400 feet.

NATIVE PLANT SOCIETY OF OREGON: Russ Jolley (503) 286-2350. Meet 9:00 AM at Beacon Rock Rest Area (milepost 35 on WA Hwy 14).

Wauna and Wahclella. Ascend Wauna Viewpoint by a combination of historic routes for a bird's-eye view of the mid-Gorge, returning via the Historic Columbia River Highway State Trail. Continue on to beautiful Wahclella Falls. Distance 7.5 miles, elevation gain 1,350 feet.

HOTLINERS: Dick Thomas (503) 236-2041. Meet at 9:00 AM at Gateway* or 9:45 AM at Toothrock Trailhead (Bonneville Exit 40; turn right, then immediately left up gravel road; turn left again at water tank; continue to trailhead parking area.)

Cape Horn. Cliff-top view points, large trees, grassy meadows. Come see a slice of the proposed Cape Horn park, the crown jewel of the west end of the Washington side of the Gorge. Distance 6 miles, elevation gain 1,000 feet.

COLUMBIA LAND TRUST: Dan Huntington (360) 253-1120. Meet 9:30 AM in Washougal.*

Grassy Knoll. Follow a path through wildflower meadows to an open ridge, featuring an abandoned lookout site and sweeping views of Mt. Hood and Mt. Adams. Distance 6 miles, elevation gain 1,500 feet.

MAZAMAS: Richard Getgen (503) 598-8788. Meet 8:00 AM at Gateway* or 8:45 AM at Bridge of the Gods Wayside.*

Hamilton Mountain. Hike past two waterfalls and through the forest to a ridge top view of the Columbia River, Mt. Adams and the Gorge. Return on the Hardy Creek Trail. Distance 8 miles, elevation gain 2,100 feet.

CHINOOK TRAIL ASSOCIATION: Fred Rogers (360) 256-2927. Meet 9:00 AM at Beacon Rock State Park picnic area (0.5 mile north of WA Hwy 14).

Silver Star Mountain. Hike through high elevation meadows with wildflowers in season and spectacular views of all major mountains. Upper portion may be snow-covered, but firm and passable. Distance 6 miles, elevation gain 1,800 feet.

CHINOOK TRAIL ASSOCIATION: Roger Anderson (360) 254-2371. Meet 9:00 AM at Clark Public Utilities (Ed Fischer operations center), 8600 NE 117th Avenue (WA Hwy 503). Take I-205 north to Orchards Exit 30 and turn right on WA Hwy 500 for 1.2 miles. At junction with NE Fourth Plain Blvd., continue north on NE 117th Avenue for about one mile to Clark Public Utilities on left-hand side.

Eagle Creek Canyon. Explore this spectacular deep canyon, passing Punch Bowl Falls and Loowit Falls. Short portions of trail are carved out of basalt cliff and have handrails. Distance 7.4 miles, elevation gain 800 feet.

OREGON NATURAL RESOURCES COUNCIL: Erin Madden (503) 283-6343 x 224. Meet 8:00 AM at The Daily Grind (41st & SE Hawthorne, Portland) or 9:00 AM at Eagle Creek Trailhead (Exit 41, turn right, and keep right along the creek for a mile to the road's end).

Wahkeena Falls/Angels Rest. Ascend along cascading Wahkeena Creek, pass Fairy Falls and Wahkeena Spring and continue to Angels Rest for a heavenly view. Distance 8.5 miles, elevation gain 1,900 feet.

MAZAMAS: Brian Conley (503) 626-8804. Meet 8:00 AM at Gateway* or 9:00 AM at Wahkeena Falls Trailhead (Bridal Veil Exit 28, then 2.6 miles east on Scenic Hwy).

Wygant Peak/Chetwoot Loop. Ascend the Chetwoot Trail to a fire lookout site with gorgeous views. Descend via the Wygant Peak Trail amidst abundant wildflowers. Distance 8 miles, elevation gain 2,300 feet.

MAZAMAS: Gerry van Deene (503) 669-0778. Meet 8:15 AM at Lewis & Clark State Park (Exit 18) or 9:00 AM at Mitchell Point Overlook (Exit 58).

Nesika. Hike past the many waterfalls of Multnomah Creek and through Multnomah Basin to Nesika Lodge. Enjoy a lunch stop at the lodge in its exquisite Gorge setting. Distance 8 miles, elevation gain 2,000 feet.

TRAILS CLUB OF OREGON: Merrill Hugo (503) 293-5102. Meet 9:00 AM at Gateway* or 9:45 AM at Multnomah Falls Lodge by the drinking fountain.

Duncan Creek. Ascend a forested ridge west of Hamilton Mountain to a new and different Gorge viewpoint. Distance 9 miles, elevation gain 2,150 feet.

MAZAMAS: Rich Conser (503) 697-4310. Meet 8:00 AM at Parkrose Park & Ride* or 8:30 AM in Washougal.*

STRENUOUS HIKES

Steep, rugged trails, high elevation gains. Excellent physical conditioning required.

Dog Mountain. Steep climb from river level to top of Dog Mountain, mostly across open meadows of wildflowers. Great views of the Columbia River and glaciated peaks from the top. Distance 6.8 miles, elevation gain 2,828 feet.

ST. HELENS HIKING CLUB: Brenda Hagins (503) 556-1637. Meet 8:30 AM at Gateway* or 9:30 AM at Dog Mountain Trailhead (WA Hwy 14, 12.5 miles east of Bridge of the Gods).

Nick Eaton Ridge. Zigzag up through dense old-growth forest and mountain meadows with spectacular views of the Columbia River. Delight in forest and meadow flowers in the lowlands to spring bloomers in the upper elevations. After lunch, visit Camp Creek Falls. Distance 9 miles, elevation gain 3,700 feet.

MULTNOMAH ATHLETIC CLUB: Sue Stonecliffe (503) 223-4252. Meet 8:30 AM at Lewis & Clark State

Park or 9:15 AM at Charburger in Cascade Locks (Exit 44).

Mt. Defiance. Climb the Starvation Ridge Trail to Mt. Defiance, the highest point in the Gorge. Majestic views of the Hood River Valley and Mt. Hood. Distance 14 miles, elevation gain 4,600 feet.

FRIENDS OF THE COLUMBIA GORGE: Bill Rudberg (360) 694-0826. Meet 7:00 AM at Starvation Creek Trailhead (Exit 55).

Benson Plateau. Ascend the Ruckel Ridge Trail and hike south through the Benson Plateau, returning down Eagle Creek Trail. Option to visit Tunnel Falls on Eagle Creek. Distance 16.6 miles, elevation gain 4,000 feet.

PTARMIGANS: Joe Hargrave (503) 235-6791. Meet 7:00 AM at Gateway* or 8:00 AM at Eagle Creek Trailhead (Exit 41).

Augsburger Ridge Trail. Traverse the length of Augsburger Mountain to Cook Hill via the highly scenic North Ridge Trail. Come enjoy the vast, open, flowered meadows. Distance 8 miles, elevation gain 1900 feet. Driving distance 125 miles with car shuttle.

TRAILS CLUB OF OREGON: Gerda Eck (503) 775-4146. Trails Club of Oregon. Meet 8:00 AM at Gateway.*

Birkenfeld Mountain. This unique, all high-country hike follows the entire length of this 3763-ft. mountain, including its south peak, then ascends Table Mountain's North Ridge trail to its summit. Spectacular panoramic views and flower-filled meadows abound. Return via the PCT. Distance 11 miles, elevation gain 2,100 feet.

MAZAMAS: Frank & Charlotte Head (503) 253-4632. Meet 7:30 AM at Lewis & Clark State Park (Exit 18) or 8:30 AM at Beacon Rock Rest Area (milepost 35 on WA Hwy 14).

BIKE TRIPS

Mosier Tunnels Ride. Easy ride on the Historic Columbia River Highway (section closed to cars) from Hood River to Mosier with descriptive narratives at stops along the way. Great for families on bikes. Bring helmet, water, and lunch. Distance 13 miles roundtrip, elevation gain 300 feet.

HISTORIC COLUMBIA RIVER HIGHWAY ADVISORY COMMITTEE: North Cheatham (541) 386-6784. Meet 10:00 AM at Mark O. Hatfield West Trailhead (Hood River Exit 64, then south on Hwy 35. Turn left at China Gorge Restaurant onto Old Columbia River Drive and travel one mile).

Mid-Gorge Ride. This strenuous 26-mile road ride begins on a restored section of the Historic Columbia River Highway (closed to cars) to Cascade Locks then continues on steep backroads to Wyeth. Riders must have a helmet and be able to carry bike up stairs on a section near Eagle Creek. Carry lunch and water. Elevation gain 2,500 feet.

FRIENDS OF THE COLUMBIA GORGE: Rick Ray (503) 695-5454. Meet 10:00 AM at Toothrock Trailhead (Bonneville Exit 40, turn right, then immediately left up gravel road. Turn left again at water tank, continue to trailhead parking area).

HORSE TRIP

Sandy River Delta. Ride your own horse on a leisurely tour of grassland, forest, and wetlands. Visit recent restoration sites and enjoy Gorge vistas. Bring your lunch for a break near the Columbia River. 3 to 4 hour ride, depending on weather conditions. Sorry, no rental horses. Rated L1, an easy ride.

OREGON EQUESTRIAN TRAILS: Valerie Lantz (503) 668-3083. Meet 10:00 AM at gravel parking lot on south side of I-84 at Exit 18.

RAFT TRIP

Rafting the Sandy River. Paddle in a 4-person raft down the scenic Sandy River. A guide/naturalist will instruct you on how to control a raft through mild rapids and will point out the natural wonders as you pass. Watch the abundant wildlife as you float by. Great trip for beginners. Participants need to bring lunch, water, rain gear, and appropriate clothing. \$40 per person, includes guide/naturalist, raft, equipment and shuttle. Register before June 10.

NW DISCOVERIES: Ken Barker (503) 624-4829. Call with questions and to register. Specify you are with Friends of the Columbia Gorge.

SUNDAY, June 17

EASY HIKES

Up to 5 miles, less than 1,000 feet elevation gain.

Whistle Punk. Join us on a one-mile flat-land hike to a wetland with an observation deck. On the way, pass logging equipment used by old-time loggers. Bring a lunch for a picnic at Hemlock Lake. All wheelchair accessible. No elevation gain.

WASHINGTON TRAILS ASSOCIATION: Tom and Diana Gordon (360) 835-7748. Meet 9:00 AM at the Bridge of the Gods Wayside.*

Larch Mountain Bird Walk. Join a naturalist from the Audubon Society of Portland for a morning atop Larch Mountain. Walk the trails at a casual pace as you look and listen for summer birds of the mountain forest. Less than 2 miles, elevation gain 500 feet. Bring binoculars and a field guide.

AUDUBON SOCIETY OF PORTLAND: Dave Helzer (503) 292-6855 x 119. Meet 8:00 AM at Larch Mountain parking lot (Exit 22, then drive 1 mile up to Corbett, turn left on the old Columbia River Highway for 2 miles, and then fork to the right on the paved Larch Mountain Road to the end).

Falls Creek Falls. Follow a stream through the forest to the base of a 250-foot waterfall in Washington's Wind River Valley. Walk 3.5 miles on a good trail, elevation gain 700 feet.

TRYON CREEK DAYTRIPPERS: Mel Taylor (503) 639-9160. Meet 9:00 AM at Gateway* or 9:45 AM at Bridge of the Gods Wayside.*

Elowah & McCord Creek Falls. The Gorge hides two of its best falls in canyons at the end of short trails. Elowah Falls is 289 ft. high in a large amphitheater. McCord Creek Falls consists of twin 60-foot fans. Distance 4 miles, elevation gain 600 feet.

TRYON CREEK DAYTRIPPERS: Keith Henson (503) 636-5061. Meet 10:00 AM at Yeon State Park (Exit 35, then east for 2.3 miles on Frontage Road.)

Historic Columbia River Highway State Trail. A five-mile walk along the re-opened section of the Historic Columbia River Highway from Cascade Locks to Eagle Creek. Includes undercrossing of I-84, restored Ruckel Creek Bridge and old-growth forest. No elevation gain.

HISTORIC COLUMBIA RIVER HIGHWAY ADVISORY COMMITTEE: Jeanette Kloos (503) 731-8234. Meet 9:00 AM at Lewis and Clark State Park (Exit 18) or 9:45 AM Cascade Locks Trailhead (Exit 44, underneath Bridge of the Gods).

Mosier Tunnels. Join us for a morning walk through the Mosier Tunnels, as we look for birds, identify plants, learn about the geology, and explore the abundant nature along the way. Distance 5 miles, elevation gain 300 feet.

JACKSON BOTTOM WETLANDS PRESERVE: Sarah Pinnock (503) 681-6278. Meet 8:00 AM at Lewis and Clark State Park or 9:00 AM at Senator Mark O. Hatfield West Trailhead (Hood River Exit 64, then south on Hwy 35. Turn left at China Gorge Restaurant onto Old Columbia River Drive and travel one mile).

MODERATE HIKES

Up to 10 miles, less than 2,500 feet elevation gain.

Larch Mountain. Hike through giant old trees, a marshy meadow, and a mossy creek hidden in the heart of this glacier-scoured crater. The climax is the panoramic view of the five volcanoes from Sherrard Point, our lunch stop atop this 4,055 foot volcano. Distance 6 miles, elevation gain 1,400 feet.

MAZAMAS: Carolyn Jenkins (503) 422-6456. Meet 8:00 AM Gateway* or 8:45 AM Portland Women's Forum State Park (on Scenic Hwy 1.8 miles east of Corbett or 1.2 miles west of Crown Point).

Wind Mountain. Hike a moderately steep trail to an authentic Native American Quest site. Distance 2 miles, elevation gain 1,100 feet.

FRIENDS OF THE COLUMBIA GORGE: Bob Miller (503) 240-3394. Meet 9:00 AM at Parkrose* or 9:45 AM at Bridge of the Gods Wayside.*

Multnomah Falls/Wahkeena Falls Loop. Hike up to the overlook above Multnomah Falls, then along beautiful Multnomah Creek past two 100-foot waterfalls. Traverse the 1991 forest fire area and visit Wahkeena Spring. Descend beside Wahkeena Creek's many cascades, passing Fairy Falls. Enjoy many Gorge vistas. Distance 6 miles, elevation gain 1,600 feet.

FRIENDS OF THE COLUMBIA GORGE: Ken Bailey (503) 287-5369. Meet 8:30 AM at Gateway* or 9:15 AM at Multnomah Falls Lodge.

McCall Point and Rowena Dell. Located on one of The Nature Conservancy's most dramatic preserves, this loop hike explores the tip of Rowena Plateau and Rowena Dell, then proceeds up an old logging road to beautiful McCall Point. Distance 8 miles, elevation gain 1,500 feet.

THE NATURE CONSERVANCY: Jeff Richard (503) 234-4800. Meet 8:00 AM at TNC's Portland office, north parking lot (821 SE 14th Ave.) or 9:30 AM at Rowena Crest Overlook (Exit 69 then east 6.9 miles east on Scenic Hwy).

Nestor Peak. Ascend through forests and woodlands in Washington's Buck Creek area to the 3,800-foot summit with a fire lookout tower. Panoramic views of the Cascades, Gorge, and Hood River Valley. Distance 8.5 miles, elevation gain 2,100 feet.

LAKE OSWEGO PARKS AND RECREATION: Kim Gilmer (503) 675-2545. Meet 8:00 AM at Bridge of the Gods Wayside.*

Devils Rest. Start this 9.5-mile loop at Wahkeena Falls, pass 3 impressive waterfalls, the 1991 forest fire area, and some old-growth forests to where the devils rest. Descend via Foxglove Way. Elevation gain 2,400 feet.

FRIENDS OF MULTNOMAH FALLS: Ron Goodwin (503) 761-4751. Meet 8:30 AM at Gresham City Hall or 9:15 AM at Wahkeena Falls parking lot (Bridal Veil Exit 28, then 2.6 miles east on Scenic Hwy).

High Valley Exploratory. Hike through a hidden valley to two great viewpoints on the Washington side of the Gorge. Not your standard hike. A sense of adventure required! Pack enough water, but only a light lunch needed. Leaders will bring a snack for mid-day at High Valley. Distance 10 miles, elevation gain 2,500 feet.

MAZAMAS: Julia Ferreira (503) 636-5520, Roy Stout (503) 775-7877, and local historian Bob Pullman. Meet 8:30 AM at Gateway* or 9:00 AM in Washougal.*

STRENUOUS HIKES

Steep, rugged trails, high elevation gains. Excellent physical conditioning required.

Table Mountain. Hike a steep, rocky trail with areas of exposure, rewarding views of the Cascades and the memorable Heartbreak Ridge. Be prepared for any conditions including snow. Distance 8 miles, elevation gain 3,400 feet.

BERGFREUNDE SKI CLUB: Sue Williams (503) 356-9708. Meet 8:00 AM at TA Travel Centers Truckstop, by McDonalds (Exit 17).

Ruckel Ridge Loop. This spectacular hike up to Benson Plateau has some steep grades and some exposure. Return along scenic Ruckel Creek with viewpoints and hanging gardens. Distance 9 miles, elevation gain 3,900 feet, but at a relaxed pace.

COLUMBIA GROUP OF SIERRA CLUB: Karen Ashford (503) 287-9612. Meet 9:00 AM at Gateway* or 10:00 AM at Eagle Creek (Exit 41 by stone restrooms).

North Lake. Ascend via the Wyeth Trail. Get a great workout while enjoying old-growth trees, wildflowers and beautiful views. Distance 12 miles, elevation gain 4,000 feet.

PTARMIGANS: Nancy Lloyd (541) 387-2217. Meet 7:30 AM at Gateway* or 8:30 AM at Wyeth Campground (Exit 51).

Rock of Ages. An unremitting uphill scramble for the first mile delivers you to a natural arch and a devil's backbone formation. More impressive views are in store along the Horsetail Creek Trail and the final descent on the Oneonta Trail. Distance 10.2 miles, elevation gain 2,800 feet.

CASCADE PRIME TIMERS: Sharon Fekety (503) 224-8886. Meet 8:30 AM at Lewis & Clark State Park (Exit 18) or 9:00 AM at Horsetail Falls (Exit 35, then west 1.4 miles on Scenic Hwy).

BIKE TRIP

Multnomah Falls and Beyond. Bike from the Sandy River to Portland Women's Forum State Park and Vista House, then down the Scenic Hwy to Multnomah Falls, and on to Ainsworth Park. Flat return option. 42-mile ride.

PORTLAND WHEELMEN TOURING CLUB: Paul Roscoe (503) 226-7315. Meet 9:30 AM Lewis and Clark State Park (Exit 18).

HORSE TRIP

Pacific Crest Trail, Washington. Ride the scenic PCT for 3 to 4 hours out and back with beautiful views all the way. Bring water and lunch for stop at one of the viewpoints. Must have own horse in reasonably good shape. Shoes recommended.

BACKCOUNTRY HORSEMEN OF WASHINGTON: Dave Welch (509) 493-1014. Be ready to ride at 10:00 AM at Bonneville Trailhead (2 miles west of Bridge of the Gods on north side of WA Hwy 14).

Friends of the Columbia Gorge promotes responsible stewardship of Gorge lands and water, encouraging public ownership of sensitive areas, and educates the public about the unique natural values of the Columbia Gorge. Friends was the lead organization in the creation of the 1986 Columbia River Gorge National Scenic Area Act.

MEMBERSHIP FORM

Friends of the Columbia Gorge invites you to join us in protecting this natural beauty.

Membership Benefits:

- Access to our special "member only" hikes
- Invitations to events including Friends' Summer Picnic and Annual Meeting
- Our quarterly newsletter, action alerts, and Gorge stewardship projects

- \$35 Basic Membership
 \$50 Sponsor \$100 Guide

Please send me information on volunteering.

name _____

address _____

city _____ state _____ zip _____

phone _____ e-mail _____

Mail with your check to:

Friends of the Columbia Gorge
522 S.W. Fifth Avenue, Suite 820
Portland, OR 97204